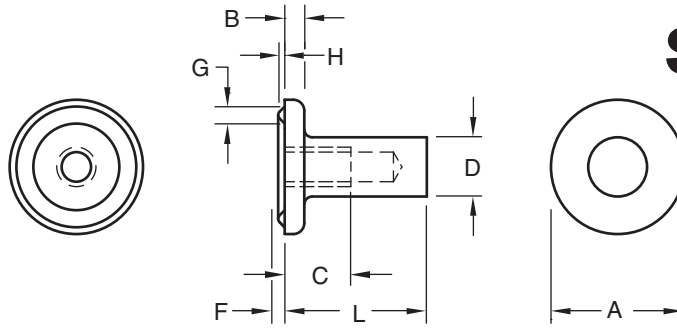


OHIO

WWZ Stainless Steel Weld Nut



Part Number	Thread Size	Minimum Thread Depth	Thickness (Overall)	Flange		Body	Projection	
				Dia.	Thickness	Dia.	Dia.	Height
				C	L	A	B	D
WWZ 1118	#6-32	0.188	0.437	0.470	0.068	0.218	0.065	0.021
			0.421	0.435	0.058	0.213	0.055	0.017
WWZ 1425	#8-32	0.250	0.562	0.470	0.083	0.250	0.065	0.021
			0.546	0.435	0.073	0.244	0.055	0.017
WWZ 1506	#10-24	0.375	0.671	0.685	0.083	0.277	0.089	0.031
			0.656	0.654	0.073	0.271	0.079	0.027
WWZ 1606	#10-32	0.375	0.671	0.685	0.083	0.277	0.089	0.031
			0.656	0.654	0.073	0.271	0.079	0.027
WWZ 2108	1/4-20	0.500	0.921	0.815	0.114	0.375	0.113	0.041
			0.906	0.785	0.104	0.367	0.103	0.037
WWZ 2709	5/16-18	0.562	0.984	0.925	0.130	0.450	0.125	0.046
			0.969	0.890	0.120	0.442	0.115	0.042
WWZ 3310	3/8-16	0.625	1.046	0.925	0.130	0.500	0.125	0.046
			1.031	0.890	0.120	0.492	0.115	0.042



The stainless steel WWZ weld nut is a blind-hole tapped nut. It has a 360° ring projection that provides a sound hermetic seal to eliminate cumbersome operations of sealing, caulking or installing gaskets.

Additional weld strength is provided by the greater weld area of the 360° ring projection. This makes it particularly suitable for welding to thin sheets. Extra long thread engagement of the WWZ stainless steel weld nut assures fastening security of mating parts.



Material: Austenitic Stainless Steel

Finish: Passivated

Threads: Unified Standard Class 2B
ASME B1.1-2003



The Ohio Nut and Bolt Company

Sales Office: Buckeye Fasteners • "Your Factory Source"

5250 West 164th Street • Cleveland Ohio 44142

Ph: (800)-437-1689 • Ph: (216)-267-2240 • Fax: (216) 267-3228

www.BuckeyeFasteners.com

A Division of Fastener Industries Inc. — An Employee Owned Company

© Copyright 2012 The Ohio Nut and Bolt Company

