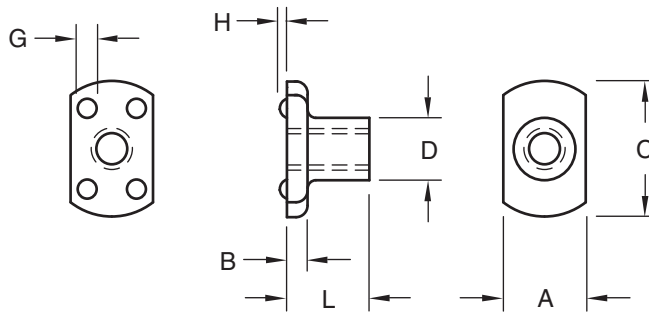


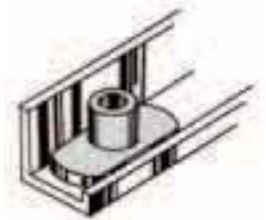
WTZ Stainless Steel Weld Nut



Part Number	Thread Size	Thickness (Overall)	Flange			Projection		Body Diameter
			Width	Thickness	Length	Dia.	Height	
			L	A	B	C	G	
WTZ 1131	#6-32	0.327	0.313	0.083	0.500	0.075	0.027	0.223
		0.307	0.298	0.073	0.480	0.065	0.023	0.213
WTZ 1431	#8-32	0.327	0.313	0.083	0.500	0.075	0.027	0.255
		0.307	0.298	0.073	0.480	0.065	0.023	0.245
WTZ 1538	#10-24	0.390	0.375	0.099	0.625	0.085	0.032	0.283
		0.370	0.360	0.089	0.605	0.075	0.028	0.273
WTZ 1638	#10-32	0.390	0.375	0.099	0.625	0.085	0.032	0.283
		0.370	0.360	0.089	0.605	0.075	0.028	0.273
WTZ 2150	1/4-20	0.515	0.500	0.114	0.815	0.120	0.045	0.378
		0.495	0.485	0.104	0.785	0.110	0.041	0.368



The stainless steel WTZ weld nut employs a "T" shaped head for use in stainless steel channels, narrow flanges or other confined areas. Four projections on top of the flange are exactly spaced to provide good weld balance, positioning and to prevent shunting of the metal into the threads. Location of projections on top of the flange eliminates the need for prepared holes because the nut is welded to (not through) the surface of the sheet.



When welded into position, the stainless steel WTZ weld nut becomes a blind-hole nut application and the longer body provides additional thread engagement for secure positive mounting.

Material: Austenitic Stainless Steel

Finish: Passivated

Threads: Unified Standard Class 2B
ASME B1.1-2003

The Ohio Nut and Bolt Company

Sales Office: Buckeye Fasteners • "Your Factory Source"

5250 West 164th Street • Cleveland Ohio 44142

Ph: (800)-437-1689 • Ph: (216)-267-2240 • Fax: (216) 267-3228

www.BuckeyeFasteners.com

A Division of Fastener Industries Inc. — An Employee Owned Company

© Copyright 2012 The Ohio Nut and Bolt Company

