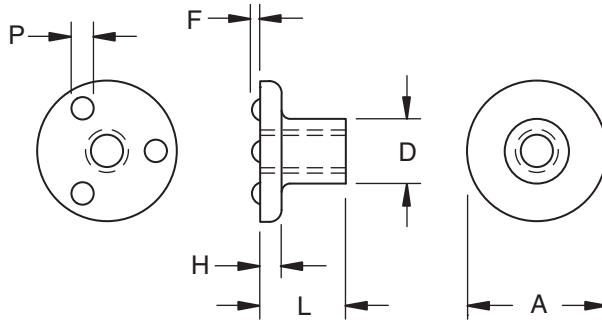


WFZ Stainless Steel Weld Nut

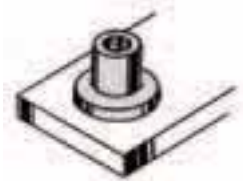


Part Number	Thread Size	Thickness (Overall)	Body Diameter	Flange		Projection	
				Dia.	Height	Dia.	Height
				L	D	A	H
WFZ 1105	#6-32	0.327	0.218	0.510	0.068	0.085	0.032
		0.307	0.213	0.480	0.058	0.075	0.028
WFZ 1405	#8-32	0.327	0.250	0.510	0.068	0.085	0.032
		0.307	0.244	0.480	0.058	0.075	0.028
WFZ 1537	#10-24	0.390	0.277	0.630	0.090	0.105	0.042
		0.370	0.271	0.600	0.080	0.095	0.038
WFZ 1637	#10-32	0.390	0.277	0.630	0.090	0.105	0.042
		0.370	0.271	0.600	0.080	0.095	0.038
WFZ 2150	1/4-20	0.515	0.375	0.815	0.114	0.135	0.052
		0.495	0.367	0.785	0.104	0.125	0.048
WFZ 2709	5/16-18	0.577	0.450	1.005	0.130	0.155	0.062
		0.557	0.442	0.970	0.120	0.145	0.058
WFZ 3310	3/8-16	0.640	0.500	1.005	0.130	0.155	0.062
		0.620	0.492	0.970	0.120	0.145	0.058



On the stainless steel WFZ weld nut, the projections are located right on the top of the flange to permit welding to (rather than through) the surface of the component. Three precision projections of uniform height and mass are properly positioned on the flange to assure a weld that leaves the exterior surface of the component virtually unmarred.

This stainless steel weld nut has been manufactured to give extra long thread engagement in blind hole applications. The long body of the nut can also function as a bearing or mounting surface or spacer.



Material: Austenitic Stainless Steel

Finish: Passivated

Threads: Unified Standard Class 2B
ASME B1.1-2003

The Ohio Nut and Bolt Company

Sales Office: Buckeye Fasteners • "Your Factory Source"

5250 West 164th Street • Cleveland Ohio 44142

Ph: (800)-437-1689 • Ph: (216)-267-2240 • Fax: (216) 267-3228

www.BuckeyeFasteners.com

A Division of Fastener Industries Inc. — An Employee Owned Company

© Copyright 2012 The Ohio Nut and Bolt Company

