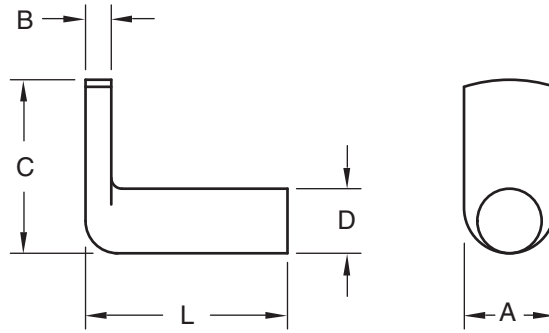


OHIO



SPZ Stainless Steel Weld Pin

Body Diameter - D		0.119	0.144	0.163	0.190	0.218	0.250	0.277
Tolerance		0.119 0.113	0.144 0.139	0.163 0.158	0.190 0.185	0.218 0.212	0.250 0.244	0.277 0.271
Spade Width (Ref.)	A	0.218	0.250	0.312	0.406	0.375	0.410	0.437
Spade Thickness	B	0.052 0.042	0.068 0.058	0.068 0.058	0.068 0.058	0.099 0.089	0.120 0.110	0.130 0.120
Spade Length (Overall) (Ref.)	C	0.562	0.625	0.688	0.688	0.750	0.750	0.875
Length (Overall) Tolerance +.000 -.031	3/8	SPZ 1106	SPZ 1406		SPZ 1906			
	1/2	SPZ 1108	SPZ 1408	SPZ 1608	SPZ 1908	SPZ 2108	SPZ 2508	
	5/8		SPZ 1410		SPZ 1910	SPZ 2110	SPZ 2510	SPZ 2710
	3/4		SPZ 1412		SPZ 1912	SPZ 2112	SPZ 2512	
	1		SPZ 1416		SPZ 1916	SPZ 2116	SPZ 2516	SPZ 2716



The stainless steel SPZ spot weld pin, with its spot weld spade at a right angle to the body, makes it ideal for use as a sturdy hinge pin or bearing surface. SPZ pins are used extensively in confined areas, channels and other limited access areas where its long narrow spade can be spot welded into place.

These pins can be welded with the same electrodes, weld settings and equipment used in normal production of components and assemblies. In this way the speed, economy and efficiency of spotwelding for regular production is utilized to make highly dependable fastening foundations.



Recommended hole in sheet is .010 / .015 above the diameter.

Material:..... Austenitic Stainless Steel

Finish:Passivated



The Ohio Nut and Bolt Company

Sales Office: Buckeye Fasteners • "Your Factory Source"

5250 West 164th Street • Cleveland Ohio 44142

Ph: (800)-437-1689 • Ph: (216)-267-2240 • Fax: (216) 267-3228

www.BuckeyeFasteners.com

A Division of Fastener Industries Inc. — An Employee Owned Company

© Copyright 2012 The Ohio Nut and Bolt Company

