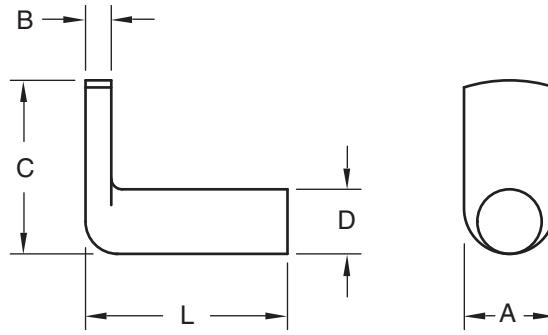


# OHIO

# SP Weld Pin



Body Diameter - D		0.117	0.144	0.163	0.190	0.218	0.250	0.277
	Tolerance	0.117 0.113	0.144 0.139	0.163 0.158	0.190 0.185	0.218 0.212	0.250 0.244	0.277 0.271
	Spade Width (Ref.)	A	0.218	0.250	0.312	0.406	0.375	0.410
Spade Thickness	B	0.052	0.068	0.068	0.068	0.099	0.120	0.130
		0.042	0.058	0.058	0.058	0.089	0.110	0.120
Spade Length Overall (Ref.)	C	0.562	0.625	0.688	0.688	0.750	0.750	0.875
Length - L (Overall) Tolerance +.000 -.031	3/8				SP 1906			
	1/2	SP 1108	SP 1408	SP 1608	SP 1908	SP 2108	SP 2508	
	5/8		SP 1410		SP 1910	SP 2110	SP 2510	SP 2710
	3/4		SP 1412		SP 1912	SP 2112	SP 2512	
	1		SP 1416		SP 1916	SP 2116	SP 2516	SP 2716



The SP spot weld pin, with its spot weld spade at a right angle to the body, makes it ideal for use as a sturdy hinge pin or bearing surface. SP pins are used extensively in confined areas, channels and other limited access areas where such a part with a long, narrow spade is to be spotwelded into place.

These pins can be welded with the same electrodes, weld settings and equipment used in normal production of components and assemblies. In this way the speed, economy and efficiency of spotwelding for regular production is utilized to make highly dependable fastening foundations.

Recommended hole in sheet is .010 / .015 above the diameter.



Material: .....C1010 High-Welding  
Quality, Low Carbon Steel

Finish: .....Plain, Unless Specified



## The Ohio Nut and Bolt Company

Sales Office: Buckeye Fasteners • "Your Factory Source"

5250 West 164th Street • Cleveland Ohio 44142

Ph: (800)-437-1689 • Ph: (216)-267-2240 • Fax: (216) 267-3228

[www.BuckeyeFasteners.com](http://www.BuckeyeFasteners.com)

A Division of Fastener Industries Inc. — An Employee Owned Company

© Copyright 2012 The Ohio Nut and Bolt Company

