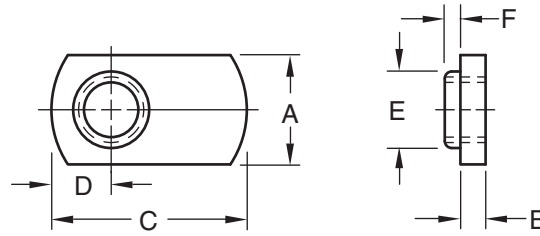


OHIO

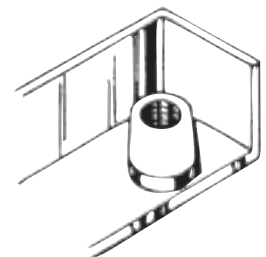
SNZ Stainless Steel Metric Weld Nut



Part Number	Thread Size / Pitch	Width		Thickness	Length	Pilot Center To End	Pilot		Hole In Sheet
				Tol.	Tol.	Tol.	Dia.	Height	
				+ 0.1 - 0.1	+ 0.4 - 0.4	+ 0.4 - 0.4	+ 0.2 - 0.3		
		A	Tol. "A"	B	C	D	E	F	
SNZ 04016	M4 x 0.7ñ6H	9.6	+ 0.3 - 0.2	2.4	15.9	4.8	5.2	0.76	5.6
SNZ 05016	M5 x 0.8ñ6H	9.6	+ 0.3 - 0.2	2.4	15.9	4.8	6.0	0.76	6.4
SNZ 06020	M6 x 1ñ6H	12.9	+ 0.3 - 0.3	3.2	20.6	6.3	7.6	1.3	8.0
SNZ 08028	M8 x 1.25ñ6H	16.15	+ 0.5 - 0.4	3.6	28.6	8.7	9.2	2.0	9.6



The SNZ metric stainless steel weld nut is a spotweld, precision-pilot nut which features an optimum welding tab. This tab will take several sizes of electrodes and permits use of the same equipment, settings and electrodes used to produce your product or product components. Where the nut is to function as a stiffener or brace, in addition to being a fastener, the SNZ weld nut is ideal.



Material: Austenitic Stainless Steel Finish: Passivated

Threads: ASME B1.13M-2005

The Ohio Nut and Bolt Company

Sales Office: Buckeye Fasteners • "Your Factory Source"

5250 West 164th Street • Cleveland Ohio 44142

Ph: (800)-437-1689 • Ph: (216)-267-2240 • Fax: (216) 267-3228

www.BuckeyeFasteners.com

A Division of Fastener Industries Inc. — An Employee Owned Company

© Copyright 2012 The Ohio Nut and Bolt Company

