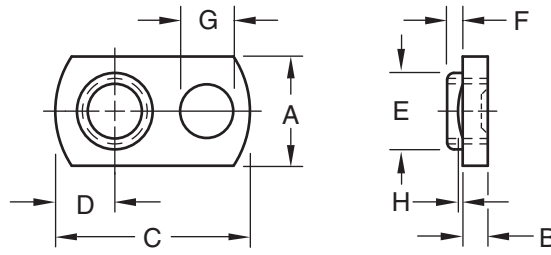


OHIO

PNZ Stainless Steel Weld Nut



Part Number	Thread Size	Width	Thickness	Length	Pilot		Projection		Center Hole To Short End	Hole In Sheet
					Dia.	Height	Dia.	Height		
					E	F	G	H		
PNZ 1406	#8-32	0.390	0.097	0.640	0.213	0.03	0.193	0.014	0.202	0.219
		0.370	0.091	0.610	0.193		0.183	0.010	0.172	
PNZ 1506	#10-24	0.390	0.097	0.640	0.244	0.03	0.193	0.014	0.202	0.250
		0.370	0.091	0.610	0.224		0.183	0.010	0.172	
PNZ 1706	#10-32	0.390	0.097	0.640	0.244	0.03	0.193	0.014	0.202	0.250
		0.370	0.091	0.610	0.224		0.183	0.010	0.172	
PNZ 2113	1/4-20	0.520	0.128	0.827	0.307	0.05	0.224	0.025	0.265	0.312
		0.495	0.122	0.797	0.287		0.214	0.021	0.235	
PNZ 2213	1/4-28	0.520	0.128	0.827	0.307	0.05	0.224	0.025	0.265	0.312
		0.495	0.122	0.797	0.287		0.214	0.021	0.235	
PNZ 2718	5/16-18	0.655	0.146	1.140	0.369	0.08	0.317	0.029	0.359	0.375
		0.620	0.138	1.110	0.349		0.307	0.025	0.329	
PNZ 3318	3/8-16	0.655	0.146	1.140	0.448	0.09	0.317	0.029	0.359	0.453
		0.620	0.138	1.110	0.428		0.307	0.025	0.329	
PNZ 3418	3/8-24	0.655	0.146	1.140	0.448	0.09	0.317	0.029	0.359	0.453
		0.620	0.138	1.110	0.428		0.307	0.025	0.329	



The PNZ stainless steel weld nut features a strong single button projection which gives a deeper, more penetrating weld than is ordinarily obtained from other types of projections. Thus, the PNZ is ideal for use with heavier gage material.

The PNZ weld nut is easy to position on both flat and curved surfaces and has a self-locating pilot that provides more thread engagement. Use of the PNZ stainless steel nut assures a positive and permanent fastener foundation.



Material: Austenitic Stainless Steel

Finish: Passivated

Threads: Unified Standard Class 2B
ASME B1.1-2003

The Ohio Nut and Bolt Company

Sales Office: Buckeye Fasteners • "Your Factory Source"

5250 West 164th Street • Cleveland Ohio 44142

Ph: (800)-437-1689 • Ph: (216)-267-2240 • Fax: (216) 267-3228

www.BuckeyeFasteners.com

A Division of Fastener Industries Inc. — An Employee Owned Company

© Copyright 2012 The Ohio Nut and Bolt Company

