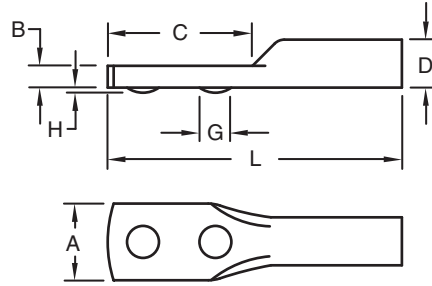
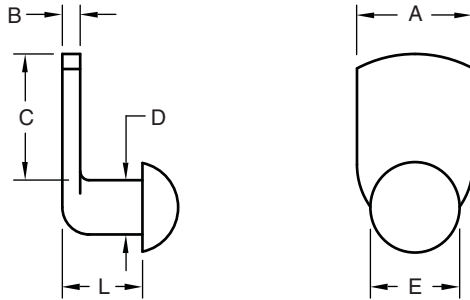


# OHIO

# JD & KL Weld Pins



Part Number	Body Diameter	Length	Spade			Projection	
			Width	Thickness	Length	Dia.	Height
	D	L	A (Ref.)	B	C (Ref.)	G	H
JD 2124	0.218	1.500	0.375	0.099	0.750	0.165	0.027
	0.212			0.089		0.155	0.021

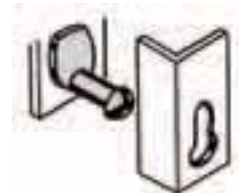


Part Number	Body Diameter	Length Under Head	Spade			Head Diameter
			Width	Thickness	Length	
	D	L	A (Ref.)	B	C (Ref.)	E
KL 1905	0.195	0.327	0.406	0.068	0.438	0.323
	0.185	0.297		0.058		0.303
KL 1909	0.195	0.577	0.406	0.068	0.438	0.323
	0.185	0.547		0.058		0.303

A JD weld pin has two uniform weld projections on a flat offset spade. These two projections fuse in a neat weld leaving the exterior surface of the sheet virtually unmarred, yet is as strong as if the pin was a part of the sheet. Excellent when a pin must be attached to the edge or the end of the sheet. Functioning well as a hinge pin or a pivot point

The KL weld pin is to be attached with spotwelding equipment. Its body comes to a round head for use with a keyhole mating part. The narrow spade allow the KL weld pin to be used in confined areas. Functions well where adjustment of components is necessary from time to time.

Recommended hole in sheet is .010 / .015 above the diameter.



Material: .....C1010 High-Welding  
Quality, Low Carbon Steel

Finish: .....Plain, Unless Specified



## The Ohio Nut and Bolt Company

Sales Office: Buckeye Fasteners • "Your Factory Source"

5250 West 164th Street • Cleveland Ohio 44142

Ph: (800)-437-1689 • Ph: (216)-267-2240 • Fax: (216) 267-3228

[www.BuckeyeFasteners.com](http://www.BuckeyeFasteners.com)

A Division of Fastener Industries Inc. — An Employee Owned Company

© Copyright 2012 The Ohio Nut and Bolt Company

