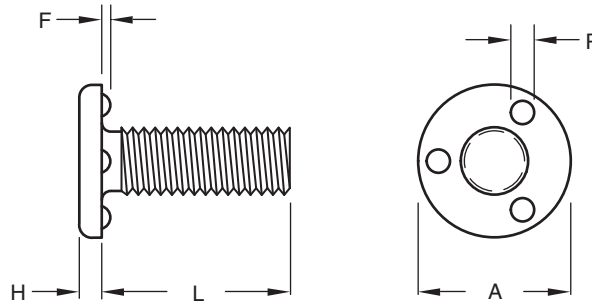


OHIO



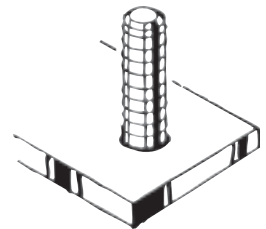
HWZ Stainless Steel Weld Screw

Thread Size		#6-32	#8-32	#10-24	#10-32	1/4-20	5/16-18	5/16-24	3/8-16	1/2-13	
Head	A-Diameter	0.323 0.303	0.385 0.365	0.448 0.428	0.448 0.428	0.575 0.550	0.755 0.725	0.755 0.725	0.880 0.850	1.005 0.975	
	H-Height	0.052 0.042	0.068 0.058	0.068 0.058	0.068 0.058	0.083 0.073	0.099 0.089	0.099 0.089	0.114 0.104	0.146 0.136	
Projections	P-Diameter	0.055 0.045	0.075 0.065	0.085 0.075	0.085 0.075	0.105 0.095	0.125 0.115	0.125 0.115	0.135 0.125	0.155 0.145	
	F-Height	0.022 0.018	0.027 0.023	0.032 0.028	0.032 0.028	0.042 0.038	0.047 0.043	0.047 0.043	0.052 0.048	0.062 0.058	
Length L (Under Head) Tolerance	1/4	HWZ 1104	HWZ 1404								
	5/16	HWZ 1105	HWZ 1405								
	3/8	HWZ 1106	HWZ 1406	HWZ 1506	HWZ 1606	HWZ 2106					
	1/2	HWZ 1108	HWZ 1408	HWZ 1508	HWZ 1608	HWZ 2108	HWZ 2708				
	5/8	HWZ 1110	HWZ 1410	HWZ 1510	HWZ 1610	HWZ 2110	HWZ 2710	HWZ 2810			
	3/4	HWZ 1112	HWZ 1412	HWZ 1512	HWZ 1612	HWZ 2112	HWZ 2712	HWZ 2812	HWZ 3312		
	+0.00 -0.03	7/8	HWZ 1114			HWZ 1614	HWZ 2114	HWZ 2714		HWZ 3314	
	1" to 2" (Inclusive)	1		HWZ 1416	HWZ 1516	HWZ 1616	HWZ 2116	HWZ 2716	HWZ 2816	HWZ 3316	HWZ 4416
	+0.00 -0.06	1-1/4		HWZ 1420	HWZ 1520	HWZ 1620	HWZ 2120	HWZ 2720		HWZ 3320	HWZ 4420
		1-1/2		HWZ 1424		HWZ 1624	HWZ 2124	HWZ 2724		HWZ 3324	HWZ 4424
		1-3/4								HWZ 3328	HWZ 4428
	Over 2" +0.00 -0.09	2					HWZ 2128			HWZ 3332	
		2-1/4					HWZ 2132	HWZ 2732			
		3					HWZ 2136				
							HWZ 2148				



Intended for through-hole applications, the stainless steel HWZ weld screw, with its three projections located precisely under the head, permits flush mounting. The projections are of the exact height, diameter and mass to assure the proper positioning and balance for optimum welds. Through-hole use allows self-locating and eliminates the need for fixturing.

Recommended hole in sheet is .015 above the major diameter.



Material: Austenitic Stainless Steel

Finish: Passivated

Threads: Unified Standard Class 2A
ASME B1.1-2003



The Ohio Nut and Bolt Company

Sales Office: Buckeye Fasteners • "Your Factory Source"

5250 West 164th Street • Cleveland Ohio 44142

Ph: (800)-437-1689 • Ph: (216)-267-2240 • Fax: (216) 267-3228

www.BuckeyeFasteners.com

A Division of Fastener Industries Inc. — An Employee Owned Company

© Copyright 2012 The Ohio Nut and Bolt Company

