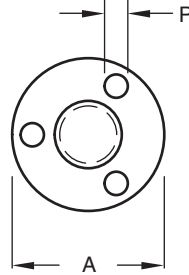
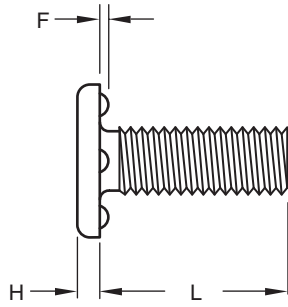


OHIO

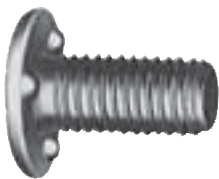
HW Weld Screw



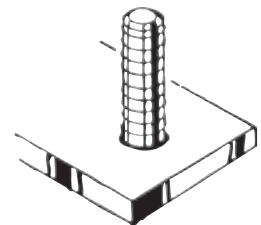
Optional dog point available upon request on select sizes

Thread Size		#6-32	#8-32	#10-24	#10-32	1/4-20	1/4-28	5/16-18	5/16-24	3/8-16	3/8-24	1/2-13
Head	A-Dia.	0.323 0.303	0.385 0.365	0.448 0.428	0.448 0.428	0.575 0.550	0.575 0.550	0.755 0.725	0.755 0.725	0.880 0.850	0.880 0.850	1.005 0.975
	H-Ht.	0.052 0.042	0.068 0.058	0.068 0.058	0.068 0.058	0.083 0.073	0.083 0.073	0.099 0.089	0.099 0.089	0.114 0.104	0.114 0.104	0.146 0.136
Projections	P-Dia.	0.055 0.045	0.075 0.065	0.085 0.075	0.085 0.075	0.105 0.095	0.105 0.095	0.125 0.115	0.125 0.115	0.135 0.125	0.135 0.125	0.155 0.145
	F-Ht.	0.022 0.018	0.027 0.023	0.032 0.028	0.032 0.028	0.042 0.038	0.042 0.038	0.047 0.043	0.047 0.043	0.052 0.048	0.052 0.048	0.062 0.058
Length L (Under Head)	1/4	HW 1104	HW 1404									
	5/16	HW 1105	HW 1405									
Tolerance	3/8	HW 1106	HW 1406	HW 1506	HW 1606	HW 2106						
	1/2	HW 1108	HW 1408	HW 1508	HW 1608	HW 2108	HW 2208	HW 2708				
To 1"	9/16				HW 1609							
	5/8	HW 1110	HW 1410	HW 1510	HW 1610	HW 2110	HW 2210	HW 2710	HW 2810			
Over 1" to 2"	3/4	HW 1112	HW 1412	HW 1512	HW 1612	HW 2112		HW 2712	HW 2812	HW 3312		
	7/8	HW 1114			HW 1614	HW 2114		HW 2714		HW 3314		
+0.00 -0.03	1		HW 1416	HW 1516	HW 1616	HW 2116		HW 2716	HW 2816	HW 3316	HW 3416	HW 4416
	1-1/4		HW 1420	HW 1520	HW 1620	HW 2120		HW 2720		HW 3320		HW 4420
Over 2"	1-1/2		HW 1424		HW 1624	HW 2124		HW 2724		HW 3324		HW 4424
	1-3/4					HW 2128				HW 3328		HW 4428
+0.00 -0.09	2					HW 2132		HW 2732		HW 3332		HW 4432
	2-1/4					HW 2136						
	3					HW 2148						

Optional dog point available upon request on select sizes



Intended for through-hole applications, the HW weld screw, with its three projections located precisely under the head, permits flush mounting. The projections are of the exact height, diameter and mass to assure the proper positioning and balance for optimum welds. Through-hole use allows self-locating and eliminates the need for fixturing.



Recommended hole in sheet is .015 above the major diameter.

Material: C1010 High-Welding Quality, Low Carbon Steel Finish: Plain, Unless Specified

Threads: Unified Standard Class 2A ASME B1.1-2003



The Ohio Nut and Bolt Company

Sales Office: Buckeye Fasteners • "Your Factory Source"

5250 West 164th Street • Cleveland Ohio 44142

Ph: (800)-437-1689 • Ph: (216)-267-2240 • Fax: (216) 267-3228

www.BuckeyeFasteners.com

A Division of Fastener Industries Inc. — An Employee Owned Company

© Copyright 2012 The Ohio Nut and Bolt Company

