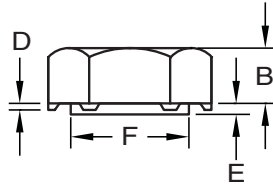
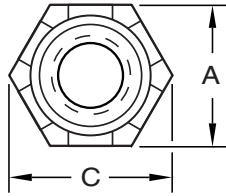


Hex Piloted Weld Nut With Six Projections

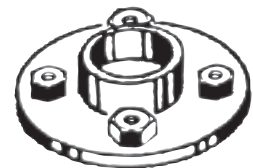


Product Specification Sheet

| Part Number | Thread Size | A Width Across Flats | | B Thickness | | C Width Across Corners | D Proj. Height +/- .003 | E Pilot. Height +/- .005 | F Pilot Diameter +/.000 -.012 |
|-------------|-------------|----------------------------|------|----------------|------|---------------------------------|-------------------------------------|--------------------------------------|---|
| | | Max. | Min. | Max. | Min. | Min. | | | |
| HS6 1420 | 1/4 - 20 | .500 | .489 | .197 | .177 | .556 | .025 | .040 | .406 |
| HM6 1420 | | | | | | | .040 | .065 | |
| HL6 1420 | | | | | | | .040 | .085 | |
| HS6 51618 | 5/16 - 18 | .562 | .551 | .229 | .209 | .624 | .025 | .040 | .469 |
| HM6 51618 | | | | | | | .040 | .070 | |
| HL6 51618 | | | | | | | .040 | .085 | |
| HS6 3816 | 3/8 - 16 | .625 | .612 | .260 | .240 | .691 | .030 | .050 | .531 |
| HL6 3816 | | | | | | | .040 | .085 | |
| HS6 71614 | 7/16 - 14 | .750 | .736 | .322 | .302 | .830 | .030 | .050 | .656 |
| HL6 71614 | | | | | | | .040 | .085 | |
| HS6 71620 | 7/16 - 20 | .750 | .736 | .322 | .302 | .830 | .030 | .050 | .656 |
| HL6 71620 | | | | | | | .040 | .085 | |
| HS6 1213 | 1/2 - 13 | .813 | .781 | .385 | .365 | .898 | .030 | .060 | .719 |
| HL6 1213 | | | | | | | .040 | .085 | |



Six uniform projections ensure maximum contact with the weld surface. The precision pilot accurately locates the threads in the pilot hole and prevents the nut from slipping off center during welding. Available in three pilot heights to accommodate a variety of metal thicknesses.



Material: C1010 High-Welding
Quality, Low Carbon Steel

Finish: Plain, Unless Specified

Threads: Unified Standard Class 2B
ASME B1.1-2003



Buckeye Fasteners, Inc.

5250 West 164th Street • Brook Park, Ohio 44142-1597

(800) 437-1689 • Fax: (216) 267-3228

buckeyefasteners.com • info@buckeyefasteners.com

© 2012 Buckeye Fasteners, Inc. All Rights Reserved

