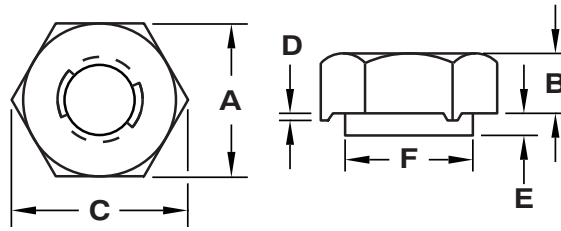


**Piloted Hex
Projection
Weld Nut
With Lock**

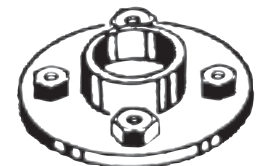


**Product
Specification
Sheet**

| Part Number | Thread Size | A Width Across Flats | | B Thickness | | C Width Across Corners Min. | D Proj. Height +/- .003 | E Pilot. Height +/- .005 | F Pilot Diameter +.000 -.012 |
|-------------|-------------|----------------------|------|-------------|------|-----------------------------|-------------------------|--------------------------|------------------------------|
| | | Max. | Min. | Max. | Min. | | | | |
| HS3L 1420 | 1/4 - 20 | .500 | .489 | .197 | .177 | .556 | .025 | .040 | .406 |
| HL3L 1420 | 1/4 - 20 | .500 | .489 | .197 | .177 | .556 | .040 | .085 | .406 |
| HS3L 51618 | 5/16 - 18 | .562 | .551 | .229 | .209 | .624 | .025 | .040 | .469 |
| HL3L 51618 | 5/16 - 18 | .562 | .551 | .229 | .209 | .624 | .040 | .085 | .469 |
| HS3L 3816 | 3/8 - 16 | .625 | .612 | .260 | .240 | .691 | .030 | .050 | .531 |
| HL3L 3816 | 3/8 - 16 | .625 | .612 | .260 | .240 | .691 | .040 | .085 | .531 |
| HS3L 1213 | 1/2 - 13 | .813 | .781 | .385 | .365 | .898 | .030 | .060 | .719 |
| HL3L 1213 | 1/2 - 13 | .813 | .781 | .385 | .365 | .898 | .040 | .085 | .719 |



Three precise weld projections provide positive contact with the weld surface even when slight surface irregularities are present. The prevailing torque locking feature provides a vibration resistant union with the mating part. Available in two pilot heights to accommodate a variety of metal thicknesses.



Material: C1010 High-Welding Quality, Low Carbon Steel

Finish: Plain, Unless Specified

Threads: Unified Standard Class 2B ASME B1.1-2003



Buckeye Fasteners, Inc.

5250 West 164th Street • Brook Park, Ohio 44142-1597

(800) 437-1689 • Fax: (216) 267-3228

buckeyefasteners.com • info@buckeyefasteners.com

© 2012 Buckeye Fasteners, Inc. All Rights Reserved

