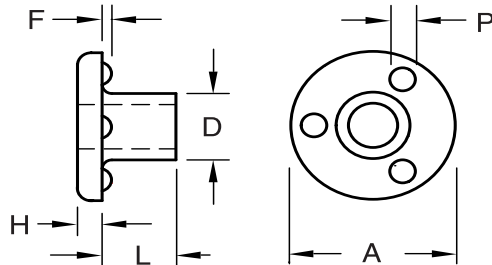


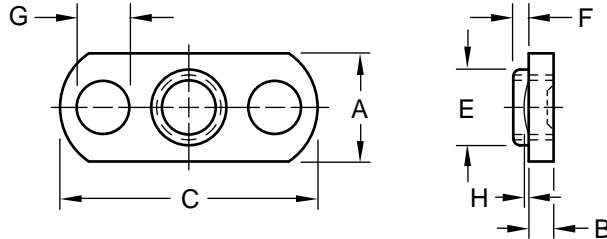
**Special Purpose Parts**

**Product Specification Sheet**



Part Number	Hole Dia.	Thickness Under Flange	Body Dia.	Flange		Projection	
				Dia.	Height	Dia.	Height
				A	H	P	F
RB 3108	0.318	0.515	0.500	1.005	0.146	0.155	0.062
	0.312	0.495	0.492	0.970	0.136	0.145	0.058

The RB boss can be used as a bushing, guide or a bearing. It has no threads and three projections on the underside of the head to insure accuracy in positioning the RB boss.



Part Number	Thread Size	Width	Thickness	Length	Pilot		Projection		Hole In Sheet
					Dia.	Height	Dia.	Height	
					E	F	G	H	
WN 2724	5/16-18	0.655	0.145	1.515	0.369	0.08	0.317	0.029	0.375
		0.620	0.139	1.485	0.349		0.307	0.025	

A dual tab projection weld nut, the WN is manufactured for use in locations requiring additional strength and where the tension is against the weld. The location of the twin tabs enables the WN nut to be used in bridging corners and on convex surfaces. The two large button projections on the WN provide great strength and are ideal for use with heavy gage material. A pilot speeds hand feeding and provides full thread engagement.

Material: .....C1010 High-Welding Quality, Low Carbon Steel  
 Finish: .....Plain, Unless Specified  
 Threads: .....Unified Standard Class 2B ASME B1.1-2003

Tensile Strength: ..... 60,000 psi  
 Yield Point: ..... 30,000 psi  
 Shear Strength: ..... 30,000 psi  
 Elongation 2" ..... 30% Max.



**Buckeye Fasteners, Inc.**

5250 West 164th Street • Brook Park, Ohio 44142-1597

(800) 437-1689 • Fax: (216) 267-3228

buckeyefasteners.com • info@buckeyefasteners.com

© 2007 Buckeye Fasteners, Inc. All Rights Reserved

