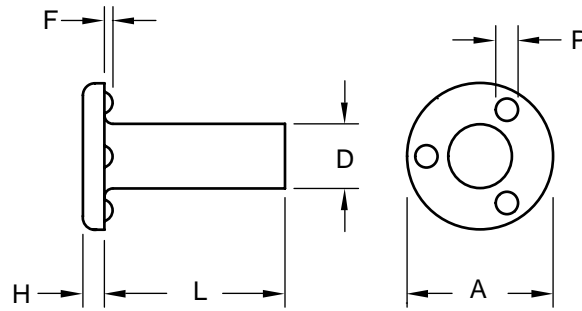


**Stainless Steel Weld Pin With 3 Projections Under The Head**

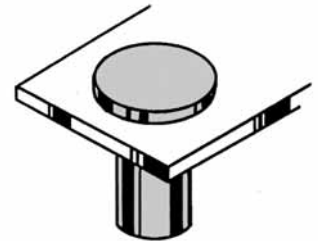


**Product Specification Sheet**

Body Diameter - D		0.119	0.144	0.163	0.190	0.218	0.250	0.277	0.335	0.375	0.500
Tolerance		0.119 0.114	0.144 0.140	0.163 0.159	0.190 0.185	0.218 0.213	0.250 0.244	0.277 0.271	0.335 0.328	0.375 0.368	0.500 0.492
Head	A-Dia.	0.323 0.303	0.385 0.365	0.448 0.428	0.510 0.490	0.575 0.550	0.635 0.610	0.755 0.725	0.880 0.850	0.880 0.850	1.005 0.975
	H-Height	0.052 0.042	0.068 0.058	0.068 0.058	0.083 0.073	0.083 0.073	0.083 0.073	0.099 0.089	0.114 0.104	0.130 0.120	0.146 0.136
Projections	P-Dia.	0.055 0.045	0.075 0.065	0.085 0.075	0.095 0.085	0.105 0.095	0.105 0.095	0.125 0.115	0.135 0.125	0.135 0.125	0.155 0.145
	F-Height	0.022 0.018	0.027 0.023	0.032 0.028	0.037 0.033	0.042 0.038	0.042 0.038	0.047 0.043	0.052 0.048	0.052 0.048	0.062 0.058
Length Under Head Tolerance +0.00 -0.03 Over 1" to 2" (Inclusive) +0.00 -0.06	1/4		PHZ 1404		PHZ 1904						
	5/16	PHZ 1105	PHZ 1405	PHZ 1605			PHZ 2505				
	3/8	PHZ 1106	PHZ 1406		PHZ 1906	PHZ 2106	PHZ 2506				
	1/2	PHZ 1108	PHZ 1408	PHZ 1608	PHZ 1908	PHZ 2108	PHZ 2508		PHZ 3308	PHZ 3708	
	5/8		PHZ 1410		PHZ 1910		PHZ 2510		PHZ 3310	PHZ 3710	
	3/4				PHZ 1912		PHZ 2512	PHZ 2712		PHZ 3712	PHZ 5012
	1				PHZ 1916		PHZ 2516		PHZ 3316	PHZ 3716	
	1-1/8										PHZ 5018
	1-1/4				PHZ 1920		PHZ 2520			PHZ 3720	
	1-1/2						PHZ 2524				
	2						PHZ 2532			PHZ 3732	



The PHZ stainless steel weld pin has three identical precision projections on the underside of the head permitting the pin to be used on through-hole applications. These projections also permit exact positioning and balance for optimum welds. In through-hole applications, the head of the pin is welded to the component's metal making a joint stronger than the surrounding area. This great strength makes the PHZ weld pin ideal for hinge pins, bearing surfaces, structural supports and stops.



Material:..... 18-8 Stainless Steel  
Finish: ..... Passivated

Tensile Strength:.....80,000 psi  
Yield Point:.....35,000 psi  
Elongation 2" ..... 55%



**Buckeye Fasteners, Inc.**

5250 West 164th Street • Brook Park, Ohio 44142-1597

(800) 437-1689 • Fax: (216) 267-3228

buckeyefasteners.com • info@buckeyefasteners.com

© 2007 Buckeye Fasteners, Inc. All Rights Reserved

