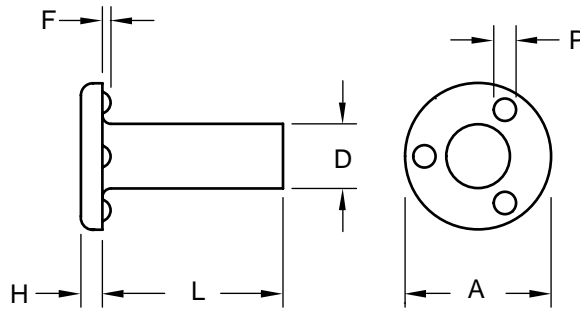


**Weld Pin
With 3
Projections
Under The
Head**

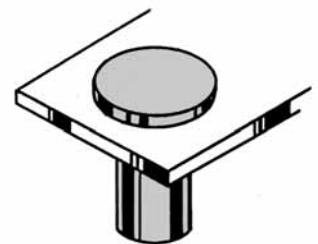


**Product
Specification
Sheet**

Body Diameter - D		0.117	0.144	0.163	0.190	0.218	0.250	0.277	0.335	0.375	0.500
	Tolerance	0.117 0.114	0.144 0.140	0.163 0.159	0.190 0.185	0.218 0.213	0.250 0.244	0.277 0.271	0.335 0.328	0.375 0.368	0.500 0.492
	Head	A-Diameter	0.323 0.303	0.385 0.365	0.448 0.428	0.510 0.490	0.575 0.550	0.635 0.610	0.755 0.725	0.880 0.850	0.880 0.850
		H-Height	0.052 0.042	0.068 0.058	0.068 0.058	0.083 0.073	0.083 0.073	0.083 0.073	0.099 0.089	0.114 0.104	0.130 0.120
Projections	P-Diameter	0.055 0.045	0.075 0.065	0.085 0.075	0.095 0.085	0.105 0.095	0.105 0.095	0.125 0.115	0.135 0.125	0.135 0.125	0.155 0.145
	F-Height	0.022 0.018	0.027 0.023	0.032 0.028	0.037 0.033	0.042 0.038	0.042 0.038	0.047 0.043	0.052 0.048	0.052 0.048	0.062 0.058
Length Under Head	1/4		PH 1404		PH 1904						
	5/16	PH 1105	PH 1405	PH 1605			PH 2505				
	3/8		PH 1406		PH 1906	PH 2106	PH 2506				
Tolerance +.00 -.03	1/2	PH 1108	PH 1408	PH 1608	PH 1908	PH 2108	PH 2508		PH 3308	PH 3708	
	5/8		PH 1410		PH 1910		PH 2510		PH 3310	PH 3710	
Over 1" to 2" (Inclusive) +.00 -.06	3/4				PH 1912		PH 2512	PH 2712		PH 3712	PH 5012
	1.0				PH 1916		PH 2516		PH 3316	PH 3716	
	1-1/8										PH 5018
	1-1/4				PH 1920		PH 2520			PH 3720	
	2.0						PH 2532			PH 3732	



The PH weld pin has three identical precision projections on the underside of the head permitting the pin to be used on through-hole applications. These projections also permit exact positioning and balance for optimum welds. In through-hole applications, the head of the pin is welded to the component's metal making a joint stronger than the surrounding area. This great strength makes the PH weld pin ideal for hinge pins, bearing surfaces, structural supports and stops.



Material:..... C1010 High-Welding
..... Quality, Low Carbon Steel
Finish: Plain, Unless Specified

Tensile Strength:.....60,000 psi
Yield Point:.....30,000 psi
Shear Strength:30,000 psi
Elongation 2" 30% Max.



Buckeye Fasteners, Inc.

5250 West 164th Street • Brook Park, Ohio 44142-1597

(800) 437-1689 • Fax: (216) 267-3228

buckeyefasteners.com • info@buckeyefasteners.com

© 2007 Buckeye Fasteners, Inc. All Rights Reserved

