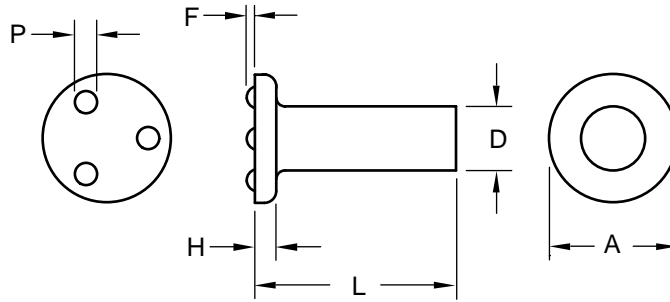


Stainless Steel Weld Pin With 3 Projections On Top Of The Head



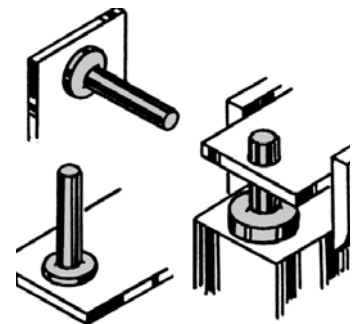
Product Specification Sheet

Body Diameter - D		0.119	0.144	0.163	0.19	0.25	0.335	0.375
Tolerance		0.119 0.114	0.144 0.140	0.163 0.159	0.190 0.185	0.250 0.244	0.335 0.328	0.375 0.367
Head	A-Diameter	0.260 0.240	0.323 0.303	0.385 0.365	0.448 0.428	0.510 0.485	0.755 0.725	0.755 0.725
	H-Height	0.046 0.036	0.052 0.042	0.068 0.058	0.068 0.058	0.083 0.073	0.114 0.104	0.114 0.104
Projections	P-Diameter	0.055 0.045	0.075 0.065	0.085 0.075	0.095 0.085	0.105 0.095	0.135 0.125	0.135 0.125
	F-Height	0.022 0.018	0.027 0.023	0.032 0.028	0.037 0.033	0.042 0.038	0.052 0.048	0.052 0.048
Length Overall Tolerance To 1" +.00 -.03	1/4				PGZ 1904			
	5/16	PGZ 1105				PGZ 2505		
	3/8		PGZ 1406					
	1/2	PGZ 1108	PGZ 1408		PGZ 1908	PGZ 2508		PGZ 3708
	5/8				PGZ 1910		PGZ 3310	
	3/4	PGZ 1112		PGZ 1612		PGZ 2512		
	1					PGZ 2516		PGZ 3716



The PGZ stainless steel weld pin is manufactured to be welded permanently to the component surface. It also functions well in concealed locations and in blind applications. The cold-forged unit construction of the PGZ stainless steel weld pin provides a bearing surface, hinge pin, stop or mounting pin, with great rigidity and strength.

Because the PGZ stainless steel weld pin needs no mounting hole, it improves both product appearance and durability. Other benefits which can be gained are improved product design, performance and manufacturing economy.



Material:..... 18-8 Stainless Steel
 Finish: Passivated

Tensile Strength:.....80,000 psi
 Yield Point:.....35,000 psi
 Elongation 2" 55%



Buckeye Fasteners, Inc.

5250 West 164th Street • Brook Park, Ohio 44142-1597

(800) 437-1689 • Fax: (216) 267-3228

buckeyefasteners.com • info@buckeyefasteners.com

© 2007 Buckeye Fasteners, Inc. All Rights Reserved

