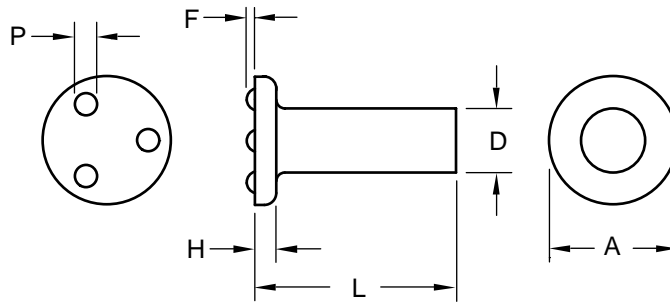


**Weld Pin  
With 3  
Projections  
On Top Of  
The Head**



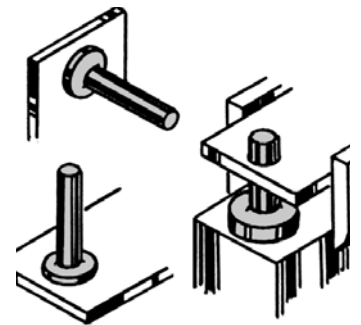
**Product  
Specification  
Sheet**

Body Diameter - D		0.117	0.144	0.163	0.190	0.250	0.335	0.375
Tolerance		0.117 0.114	0.144 0.140	0.163 0.159	0.190 0.185	0.250 0.244	0.335 0.328	0.375 0.367
Head	A-Diameter	0.260 0.240	0.323 0.303	0.385 0.365	0.448 0.428	0.510 0.485	0.755 0.725	0.755 0.725
	H-Height	0.046 0.036	0.052 0.042	0.068 0.058	0.068 0.058	0.083 0.073	0.114 0.104	0.114 0.104
Projection	P-Diameter	0.055 0.045	0.075 0.065	0.085 0.075	0.095 0.085	0.105 0.095	0.135 0.125	0.135 0.125
	F-Height	0.022 0.018	0.027 0.023	0.032 0.028	0.037 0.033	0.042 0.038	0.052 0.048	0.052 0.048
Length Overall - L	1/4				PG 1904			
	5/16	PG 1105				PG 2505		
	3/8		PG 1406					
Tolerance To 1"	1/2	PG 1108	PG 1408		PG 1908	PG 2508		PG 3708
	5/8				PG 1910		PG 3310	
	3/4	PG 1112		PG 1612		PG 2512		
	1					PG 2516		PG 3716



The PG weld pin is manufactured to be welded permanently to the component surface. It also functions well in concealed locations and in blind applications. The cold-forged unit construction of the PG weld pin provides a bearing surface, hinge pin, stop or mounting pin, with great rigidity and strength.

Because the PG weld pin needs no mounting hole, it improves both product appearance and durability. Other benefits which can be gained are improved product design, performance and manufacturing economy.



Material:..... C1010 High-Welding  
..... Quality, Low Carbon Steel  
Finish: ..... Plain, Unless Specified

Tensile Strength:.....60,000 psi  
Yield Point:.....30,000 psi  
Shear Strength: .....30,000 psi  
Elongation 2" ..... 30% Max.



**Buckeye Fasteners, Inc.**

5250 West 164th Street • Brook Park, Ohio 44142-1597

(800) 437-1689 • Fax: (216) 267-3228

buckeyefasteners.com • info@buckeyefasteners.com

© 2007 Buckeye Fasteners, Inc. All Rights Reserved

