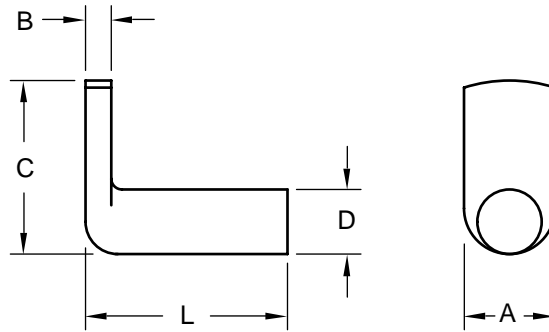


**Stainless Steel Right Angle Spot Weld Pin**



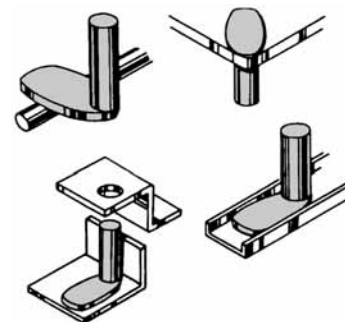
**Product Specification Sheet**

Body Diameter - D		0.119	0.144	0.163	0.190	0.218	0.250	0.277
Tolerance		0.119 0.113	0.144 0.139	0.163 0.158	0.190 0.185	0.218 0.212	0.250 0.244	0.277 0.271
Spade Width (Ref.)	A	0.218	0.250	0.312	0.406	0.375	0.410	0.437
Spade Thickness	B	0.052 0.042	0.068 0.058	0.068 0.058	0.068 0.058	0.099 0.089	0.120 0.110	0.130 0.120
Spade Length (Overall) (Ref.)	C	0.562	0.625	0.688	0.688	0.750	0.750	0.875
Length (Overall) Tolerance	3/8	SPZ 1106	SPZ 1406		SPZ 1906			
	1/2	SPZ 1108	SPZ 1408	SPZ 1608	SPZ 1908	SPZ 2108	SPZ 2508	
	5/8		SPZ 1410		SPZ 1910	SPZ 2110	SPZ 2510	SPZ 2710
	3/4		SPZ 1412		SPZ 1912	SPZ 2112	SPZ 2512	
	1		SPZ 1416		SPZ 1916	SPZ 2116	SPZ 2516	SPZ 2716



The stainless steel SPZ spot weld pin, with its spot weld spade at a right angle to the body, makes it ideal for use as a sturdy hinge pin or bearing surface. SPZ pins are used extensively in confined areas, channels and other limited access areas where such a part with a long, narrow spade is to be spotwelded into place

These stainless steel pins have been developed to be welded with the same tips and weld setups used to join light assemblies and sheets in other operations. In this way the speed, economy and efficiency of spotwelding for regular production is utilized to make highly dependable fastening foundations.



Material:..... 18-8 Stainless Steel  
 Finish:..... Passivated

Tensile Strength:.....80,000 psi  
 Yield Point:.....35,000 psi  
 Elongation 2" ..... 55%



**Buckeye Fasteners, Inc.**

5250 West 164th Street • Brook Park, Ohio 44142-1597

(800) 437-1689 • Fax: (216) 267-3228

buckeyefasteners.com • info@buckeyefasteners.com

© 2007 Buckeye Fasteners, Inc. All Rights Reserved

