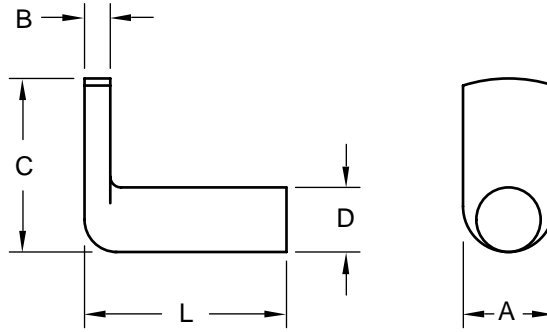


**Right Angle Spot Weld Pin**



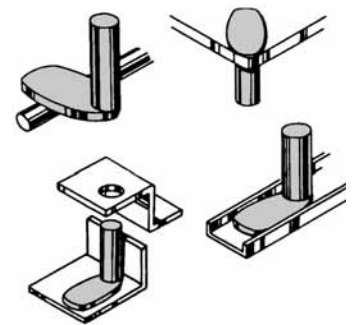
**Product Specification Sheet**

Body Diameter - D		0.117	0.144	0.163	0.190	0.218	0.250	0.277
	Tolerance	0.117	0.144	0.163	0.190	0.218	0.250	0.277
		0.113	0.139	0.158	0.185	0.212	0.244	0.271
Spade Width (Ref.)	A	0.218	0.250	0.312	0.406	0.375	0.410	0.437
Spade Thickness	B	0.052	0.068	0.068	0.068	0.099	0.120	0.130
		0.042	0.058	0.058	0.058	0.089	0.110	0.120
Spade Length Overall (Ref.)	C	0.562	0.625	0.688	0.688	0.750	0.750	0.875
Length - L (Overall) Tolerance +0.000 -0.031	3/8				SP 1906			
	1/2	SP 1108	SP 1408	SP 1608	SP 1908	SP 2108	SP 2508	
	5/8		SP 1410		SP 1910	SP 2110	SP 2510	SP 2710
	3/4		SP 1412		SP 1912	SP 2112	SP 2512	
	1		SP 1416		SP 1916	SP 2116	SP 2516	SP 2716



The SP spot weld pin, with its spot weld spade at a right angle to the body, makes it ideal for use as a sturdy hinge pin or bearing surface. SP pins are used extensively in confined areas, channels and other limited access areas where such a part with a long, narrow spade is to be spotwelded into place

These pins have been developed to be welded with the same tips and weld setups used to join light assemblies and sheets in other operations. In this way the speed, economy and efficiency of spotwelding for regular production is utilized to make highly dependable fastening foundations.



Material:..... C1010 High-Welding  
 ..... Quality, Low Carbon Steel  
 Finish: ..... Plain, Unless Specified

Tensile Strength:.....60,000 psi  
 Yield Point:.....30,000 psi  
 Shear Strength: .....30,000 psi  
 Elongation 2" ..... 30% Max.



**Buckeye Fasteners, Inc.**

5250 West 164th Street • Brook Park, Ohio 44142-1597

**(800) 437-1689 • Fax: (216) 267-3228**

buckeyefasteners.com • info@buckeyefasteners.com

© 2007 Buckeye Fasteners, Inc. All Rights Reserved

