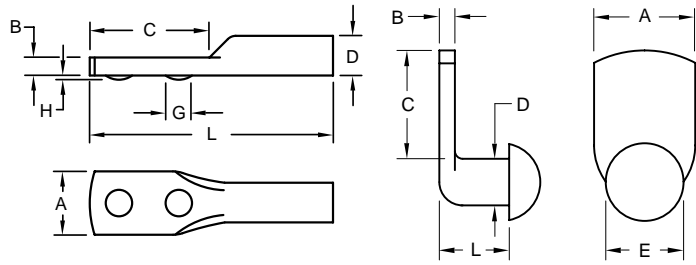


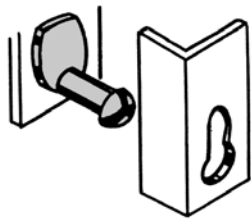
Spade Type Weld Pins



Product Specification Sheet



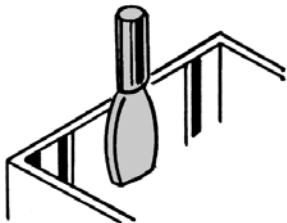
Part Number	Body Diameter	Length Under Head	Spade			Head Diameter
			Width	Thickness	Length	
	D	L	A (Ref.)	B	C (Ref.)	E
KL 1905	0.195	0.327	0.406	0.068	0.438	0.323
	0.185	0.297		0.058		0.303
KL 1909	0.195	0.577	0.406	0.068	0.438	0.323
	0.185	0.547		0.058		0.303



The KL weld pin is to be attached with spotwelding equipment. Its body comes to a round head for use with a keyhole mating part. The narrow spade allow the KL weld pin to be used in confined areas. Functions well where adjustment of components is necessary from time to time.



Part Number	Body Diameter	Length	Spade			Projection	
			Width	Thickness	Length	Dia.	Height
	D	L	A (Ref.)	B	C (Ref.)	G	H
JD 2124	0.218	1.500	0.375	0.099	0.750	0.165	0.027
	0.212			0.089		0.155	0.021



A JD weld pin has two uniform weld projections on a flat offset spade. These two projections fuse in a neat weld leaving the exterior surface of the sheet virtually unmarred, yet is as strong as if the pin was a part of the sheet. Excellent when a pin must be attached to the edge or the end of the sheet. Functioning well as a hinge pin or a pivot point

Material:C1010 High-Welding Quality, Low Carbon Steel
 Finish:Plain, Unless Specified

Tensile Strength:60,000 psi
 Yield Point:30,000 psi
 Shear Strength:30,000 psi
 Elongation 2" 30% Max.



Buckeye Fasteners, Inc.

5250 West 164th Street • Brook Park, Ohio 44142-1597

(800) 437-1689 • Fax: (216) 267-3228

buckeyefasteners.com • info@buckeyefasteners.com

© 2007 Buckeye Fasteners, Inc. All Rights Reserved

