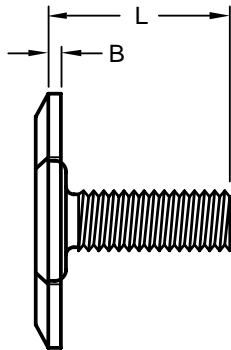
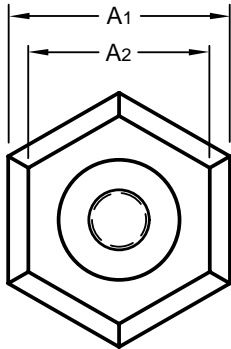
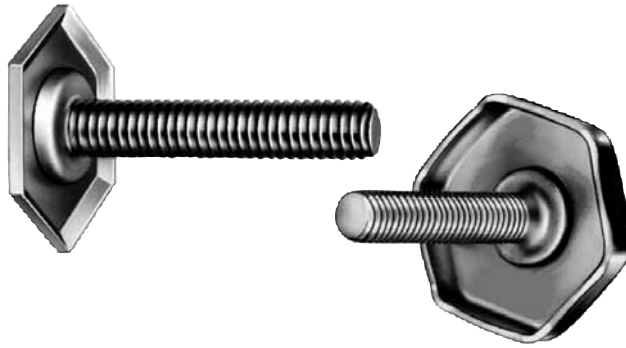


# Hexagon Broad Base Leveler

# Product Specification Sheet

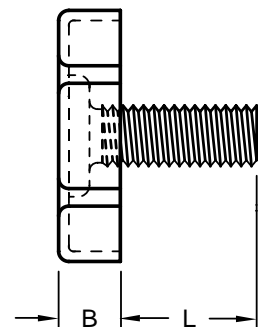
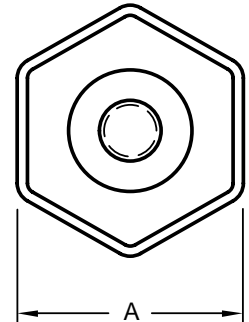


Part Number	Thread Size	Length	Base		
			Width		Thickness
			Across Flats	Bearing Surface	
		L	A1	A2	B
FA 2720	5/16-18	1.250	1.375	1.125	0.078
FA 3332	3/8-16	2.000	1.375	1.125	0.078

The FA is a streamlined leveler with a low silhouette and a broad, smooth base that makes it extremely useful in areas where clearance is limited or where its clean, modern look will enhance product appearance. Full threads allow flush to head adjustment.

Part Number	Thread Size	Exposed Thread Length	Base	
			Width Across Flats	Height
			A	B
FT 2124	1/4-20	1.500	1.375	0.312
FT 2724	5/16-18	1.500	1.375	0.312
FT 2740	5/16-18	2.500	1.375	0.312
FT 3324	3/8-16	1.500	1.375	0.312
FT 4424	1/2-13	1.500	1.375	0.312
FT 4448	1/2-13	3.000	1.375	0.312

The sturdy FT leveler provides a broad bearing surface without indentation to minimize marking of the floor. Its hexagonal base makes adjustment easy and it has a strong resistance weld between the screw and base to withstand power driver torque loads. In addition, the FT also makes a durable hand adjustment knob.



Material: .....C1010 High-Welding Quality, Low Carbon Steel  
 Finish: .....Plain, Unless Specified  
 Threads: .....Unified Standard Class 2A ASME B1.1-2003

Tensile Strength: .....60,000 psi  
 Yield Point: .....30,000 psi  
 Shear Strength: .....30,000 psi  
 Elongation 2" .....30% Max.



## Buckeye Fasteners, Inc.

5250 West 164th Street • Brook Park, Ohio 44142-1597

(800) 437-1689 • Fax: (216) 267-3228

buckeyefasteners.com • info@buckeyefasteners.com

© 2007 Buckeye Fasteners, Inc. All Rights Reserved

