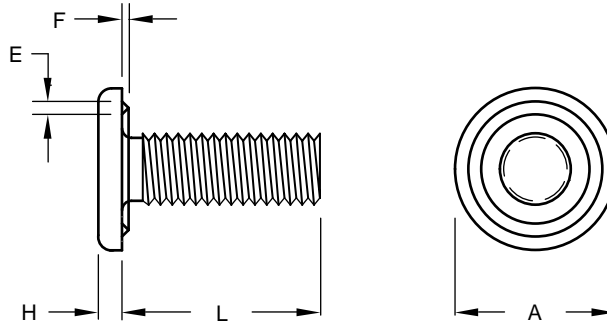


Stainless Steel Weld Screw With Ring Projection Under Head

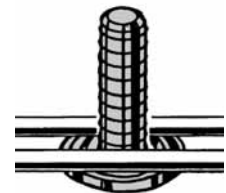


Product Specification Sheet

Thread Size		#6-32	#8-32	#10-32	1/4-20	5/16-18	3/8-16
Head	A-Diameter	0.323 0.303	0.385 0.365	0.448 0.428	0.575 0.550	0.755 0.725	0.880 0.850
	H-Height	0.052 0.042	0.068 0.058	0.068 0.058	0.083 0.073	0.099 0.089	0.114 0.104
Projections	E-Width (Ref.)	0.025	0.031	0.035	0.048	0.060	0.068
	F-Height	0.015 0.010	0.018 0.013	0.020 0.015	0.027 0.021	0.033 0.027	0.037 0.031
Length (From Under The Head)	3/8	RWZ 1106	RWZ 1406				
	1/2		RWZ 1408	RWZ 1608	RWZ 2108		
	5/8			RWZ 1610	RWZ 2110	RWZ 2710	
	3/4				RWZ 2112	RWZ 2712	RWZ 3312
Tolerance +.00 -.03 Over 1" to 2" (Inclusive) +.00 -.06	7/8				RWZ 2114		
	1		RWZ 1416		RWZ 2116	RWZ 2716	RWZ 3316
	1-1/4			RWZ 1620	RWZ 2120	RWZ 2720	RWZ 3320
	2					RWZ 2732	



The stainless steel RWZ weld screw, for through-hole applications, features a 360° ring projection that provides a completely circular weld seal. The large weld area on the RWZ gives great weld strength which can be used in applications requiring additional weld strength. The full ring projection is also ideal for cross wire welding or welding to screen, perforated metal or tubing. The RWZ stainless steel weld screw is found on applications in the air conditioning and refrigeration fields where a leak proof seal is necessary.



Material: 18-8 Stainless Steel
 Finish: Passivated
 Threads: Unified Standard Class 2A
 ASME B1.1-2003

Tensile Strength: 80,000 psi
 Yield Point: 35,000 psi
 Elongation 2" 55%



Buckeye Fasteners, Inc.

5250 West 164th Street • Brook Park, Ohio 44142-1597

(800) 437-1689 • Fax: (216) 267-3228

buckeyefasteners.com • info@buckeyefasteners.com

© 2007 Buckeye Fasteners, Inc. All Rights Reserved

