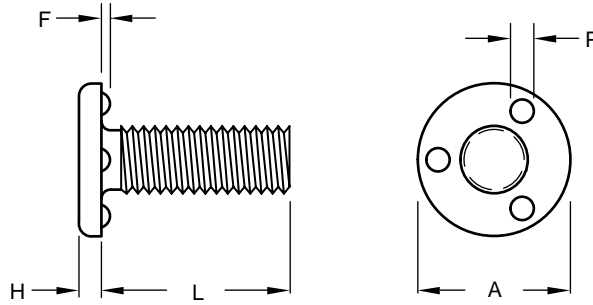
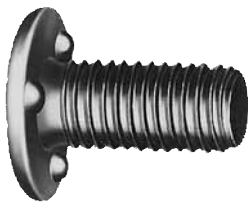


Stainless Steel Through Hole Three Projection Weld Screw

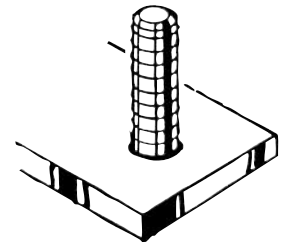


Product Specification Sheet

| Thread Size | | #6-32 | #8-32 | #10-24 | #10-32 | 1/4-20 | 5/16-18 | 5/16-24 | 3/8-16 | 1/2-13 |
|--|------------|----------------|----------------|----------------|----------------|----------------|----------------|----------------|----------------|----------------|
| Head | A-Diameter | 0.323 0.303 | 0.385 0.365 | 0.448 0.428 | 0.448 0.428 | 0.575 0.550 | 0.755 0.725 | 0.755 0.725 | 0.880 0.850 | 1.005 0.975 |
| | H-Height | 0.052 0.042 | 0.068 0.058 | 0.068 0.058 | 0.068 0.058 | 0.083 0.073 | 0.099 0.089 | 0.099 0.089 | 0.114 0.104 | 0.146 0.136 |
| Projections | P-Diameter | 0.055 0.045 | 0.075 0.065 | 0.085 0.075 | 0.085 0.075 | 0.105 0.095 | 0.125 0.115 | 0.125 0.115 | 0.135 0.125 | 0.155 0.145 |
| | F-Height | 0.022 0.018 | 0.027 0.023 | 0.032 0.028 | 0.032 0.028 | 0.042 0.038 | 0.047 0.043 | 0.047 0.043 | 0.052 0.048 | 0.062 0.058 |
| Length L (Under Head) Tolerance To 1" +.00 -.03 1" to 2" (Inclusive) +.00 -.06 Over 2" +.00 -.09 | 1/4 | HWZ 1104 | HWZ 1404 | | | | | | | |
| | 5/16 | HWZ 1105 | HWZ 1405 | | | | | | | |
| | 3/8 | HWZ 1106 | HWZ 1406 | HWZ 1506 | HWZ 1606 | HWZ 2106 | | | | |
| | 1/2 | HWZ 1108 | HWZ 1408 | HWZ 1508 | HWZ 1608 | HWZ 2108 | HWZ 2708 | | | |
| | 5/8 | HWZ 1110 | HWZ 1410 | HWZ 1510 | HWZ 1610 | HWZ 2110 | HWZ 2710 | HWZ 2810 | | |
| | 3/4 | HWZ 1112 | HWZ 1412 | HWZ 1512 | HWZ 1612 | HWZ 2112 | HWZ 2712 | HWZ 2812 | HWZ 3312 | |
| | 7/8 | HWZ 1114 | | | HWZ 1614 | HWZ 2114 | HWZ 2714 | | HWZ 3314 | |
| | 1 | | HWZ 1416 | HWZ 1516 | HWZ 1616 | HWZ 2116 | HWZ 2716 | HWZ 2816 | HWZ 3316 | HWZ 4416 |
| | 1-1/4 | | HWZ 1420 | HWZ 1520 | HWZ 1620 | HWZ 2120 | HWZ 2720 | | HWZ 3320 | HWZ 4420 |
| | 1-1/2 | | HWZ 1424 | | HWZ 1624 | HWZ 2124 | HWZ 2724 | | HWZ 3324 | HWZ 4424 |
| | 1-3/4 | | | | | HWZ 2128 | | | HWZ 3328 | HWZ 4428 |
| | 2 | | | | | HWZ 2132 | HWZ 2732 | | HWZ 3332 | |
| | 2-1/4 | | | | | HWZ 2136 | | | | |
| | 3 | | | | | HWZ 2148 | | | | |



Intended for through-hole applications, the stainless steel HWZ weld screw, with its three projections located precisely under the head, permits flush mounting. The projections are of the exact height, diameter and mass to assure the proper positioning and balance for optimum welds. Through-hole use allows self-locating and eliminates the need for fixturing.



Material: 18-8 Stainless Steel
 Finish: Passivated
 Threads: Unified Standard Class 2A
 ASME B1.1-2003

Tensile Strength: 80,000 psi
 Yield Point: 35,000 psi
 Elongation 2" 55%



Buckeye Fasteners, Inc.

5250 West 164th Street • Brook Park, Ohio 44142-1597

(800) 437-1689 • Fax: (216) 267-3228

buckeyefasteners.com • info@buckeyefasteners.com

© 2007 Buckeye Fasteners, Inc. All Rights Reserved

