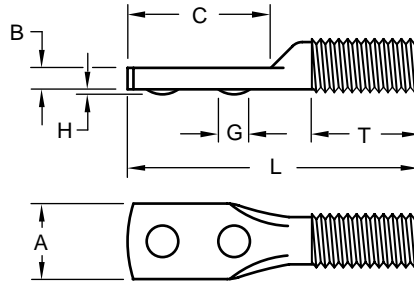


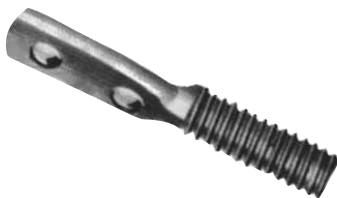
Spade Weld Screw With Projections



Product Specification Sheet

Thread Size		#6-32	#8-32	#10-24	#10-32	1/4-20	5/16-18	3/8-16
Spade Width (Ref.)	A	0.218	0.250	0.312	0.343	0.375	0.437	0.531
Spade Thickness	B	0.052	0.067	0.067	0.067	0.099	0.130	0.161
		0.042	0.057	0.057	0.057	0.089	0.120	0.151
Spade Length (Ref.)	C	0.438	0.500	0.625	0.625	0.750	0.875	1.000
Projections	G-Diameter	0.105	0.115	0.130	0.130	0.165	0.185	0.225
	H-Height	0.020	0.023	0.025	0.025	0.027	0.033	0.038
		0.014	0.017	0.019	0.019	0.021	0.027	0.032
Length (Overall)	Min. Thread Length (T)	#6-32	#8-32	#10-24	#10-32	1/4-20	5/16-18	3/8-16
		3/4	1/4	PD 1112				
		7/8	3/8	PD 1114				
		1	3/8		PD 1416			
		1-1/4	5/8		PD 1420			
		1-1/4	3/8			PD 2120		
		1-1/2	3/4		PD 1524	PD 1624		
		1-1/2	5/8			PD 2124		
		1-1/2	7/16				PD 2724	
		1-3/4	7/8			PD 2128		
		1-3/4	11/16				PD 2728	
		1-3/4	1/2					PD 3328
		2	1-1/8			PD 2132		
		2	3/4					PD 3332
		2-1/4	1-3/8			PD 2136		
		2-1/2	1-1/4					PD 3340
		3	1-1/2					PD 3348

Cold formed for great strength and accuracy, the PD weld screw has an offset spade with two weld projections. This feature enables the PD to be used where a threaded fastener is required on the edge of a sheet or on the side of a component part.



The PD weld screw is particularly useful for mounting covers or lids and, in addition, can be conveniently welded on tubing or to curved surfaces. PD weld screws not only make assembly of components easier, but they contribute to better product performance by providing a strong, durable fastening method.



Material:C1010 High-Welding Quality, Low Carbon Steel
 Finish:Plain, Unless Specified
 Threads:Unified Standard Class 2A ASME B1.1-2003

Tensile Strength:60,000 psi
 Yield Point:30,000 psi
 Shear Strength:30,000 psi
 Elongation 2"30% Max.



Buckeye Fasteners, Inc.

5250 West 164th Street • Brook Park, Ohio 44142-1597

(800) 437-1689 • Fax: (216) 267-3228

buckeyefasteners.com • info@buckeyefasteners.com

© 2007 Buckeye Fasteners, Inc. All Rights Reserved

