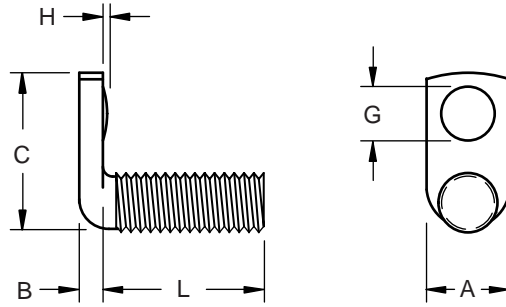
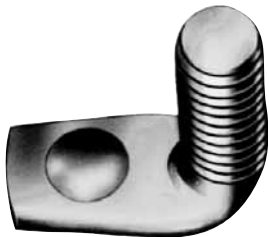


**Projection  
Weld Screw  
With Right  
Angle Spade**

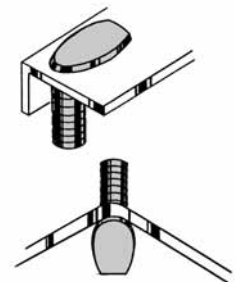


**Product  
Specification  
Sheet**

Part Number	Thread Size	Length (Under Head) L	Spade			Projection	
			Width A (Ref.)	Thickness B	Length C (Ref.)	Diameter G	Height H
DW 2108	1/4-20	0.500	0.375	0.099	0.750	0.223	0.029
		0.470		0.089		0.213	0.025
DW 2712	5/16-18	0.750	0.438	0.130	0.875	0.286	0.029
		0.720		0.120		0.276	0.025



The DW weld screw is manufactured with a long, narrow spade at right angles to the thread and a single button weld projection. The DW weld screw is particularly suitable for use in narrow channels, confined areas and corners. It can also be used in applications where threads must be offset from the surface. The DW weld screw is easy to locate and it produces a strong, sound weld.



Material: .....C1010 High-Welding  
Quality, Low Carbon Steel  
Finish: .....Plain, Unless Specified  
Threads: .....Unified Standard Class 2A  
ASME B1.1-2003

Tensile Strength: ..... 60,000 psi  
Yield Point: ..... 30,000 psi  
Shear Strength: ..... 30,000 psi  
Elongation 2" ..... 30% Max.



**Buckeye Fasteners, Inc.**

5250 West 164th Street • Brook Park, Ohio 44142-1597

**(800) 437-1689 • Fax: (216) 267-3228**

buckeyefasteners.com • info@buckeyefasteners.com

© 2007 Buckeye Fasteners, Inc. All Rights Reserved

