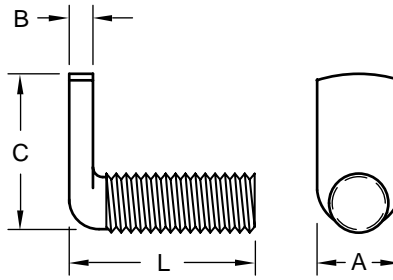


Stainless Steel Right Angle Spotweld Screw

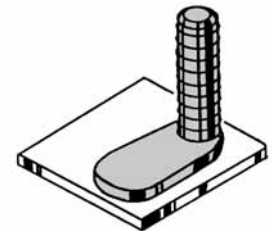


Product Specification Sheet

| Thread Size | | #6-32 | #8-32 | #10-24 | #10-32 | 1/4-20 | 5/16-18 | 3/8-16 |
|---------------------------|----------|----------|----------|----------|----------|----------|----------|----------|
| Spade | A (Ref.) | 0.218 | 0.250 | 0.312 | 0.343 | 0.375 | 0.437 | 0.531 |
| | B | 0.052 | 0.068 | 0.068 | 0.068 | 0.099 | 0.130 | 0.161 |
| | | 0.042 | 0.058 | 0.058 | 0.058 | 0.089 | 0.120 | 0.151 |
| C (Ref.) | 0.562 | 0.625 | 0.688 | 0.688 | 0.750 | 0.875 | 1.000 | |
| Length (Overall) | 3/8 | SSZ 1106 | SSZ 1406 | SSZ 1506 | SSZ 1606 | | | |
| | 1/2 | SSZ 1108 | SSZ 1408 | SSZ 1508 | SSZ 1608 | SSZ 2108 | | |
| | 5/8 | | SSZ 1410 | SSZ 1510 | | SSZ 2110 | SSZ 2710 | |
| Tolerance | 3/4 | | SSZ 1412 | SSZ 1512 | SSZ 1612 | SSZ 2112 | SSZ 2712 | |
| | +0.00 | 7/8 | | | | SSZ 2114 | | |
| Over 1" to 2" (Inclusive) | -0.03 | 1 | | SSZ 1416 | SSZ 1516 | SSZ 1616 | SSZ 2116 | SSZ 2716 |
| | +0.00 | 1-1/4 | | | SSZ 1520 | | SSZ 2120 | SSZ 2720 |
| | | 1-1/2 | | SSZ 1424 | SSZ 1524 | | SSZ 2124 | SSZ 2724 |
| -0.06 | 1-3/4 | | | | | SSZ 2128 | | |
| | 2 | | | SSZ 1532 | | SSZ 2132 | SSZ 2732 | |



The SSZ stainless steel spot weld screw has an ideally shaped flat spade at a right angle to the threads. The spade offers dual advantages; it permits welding to or through metal surfaces. The spade has been manufactured to accommodate various sizes of electrode tips. Because it is a spot weld part, the same settings, electrodes and welding equipment used normally in your production can also be utilized to apply SSZ stainless steel spot weld screws. This screw is used to good advantage in confined areas such as narrow channels, walled corners and in those applications requiring threads offset from component surfaces



Material: 18-8 Stainless Steel
 Finish: Passivated
 Threads: Unified Standard Class 2A
 ASME B1.1-2003

Tensile Strength: 80,000 psi
 Yield Point: 35,000 psi
 Elongation 2" 55%



Buckeye Fasteners, Inc.

5250 West 164th Street • Brook Park, Ohio 44142-1597

(800) 437-1689 • Fax: (216) 267-3228

buckeyefasteners.com • info@buckeyefasteners.com

© 2007 Buckeye Fasteners, Inc. All Rights Reserved

