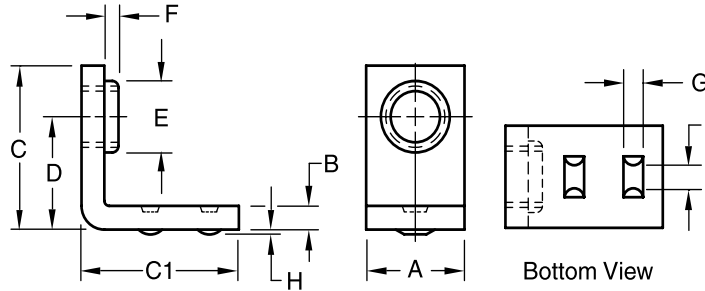


Metric Right Angle Weld Bracket

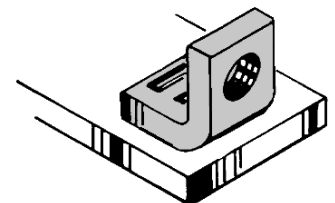


Product Specification Sheet

Part Number	Thread Size	Width	Thick.	Length of Leg From End to Angle		Ctr. of Hole To Angle	Pilot		Projection		
		Tol.	Tol.	Tol.	Tol.		Tol.	Tol.	Width	Height	Length
		+ 0.4	+ 0.1	+ 0.4	+ 0.4	+ 0.3	+ 0.2	+ 0.3	+ 0.10	+ 0.08	+ 0.4
		- 0.3	- 0.1	- 0.4	- 0.4	- 0.5	- 0.3	- 0.1	- 0.15	- 0.07	- 0.4
		A	B	C	C1	D	E	F	G	H	I
BTM 04008	M4 x 0.7-6H	13.0	3.2	12.7	15.9	8	None	None	2.4	0.3	2.4
BTM 04011	M4 x 0.7-6H	13.0	3.2	15.1	16.6	10	None	None	2.4	0.3	2.4
BTM 05011	M5 x 0.8-6H	13.0	3.2	15.1	16.6	10	None	None	2.4	0.3	2.4
BTM 06012	M6 x 1-6H	13.0	3.2	19.1	19.1	12	7.6	1.2	2.8	0.5	3.2
BTM 08016	M8 x 1.25-6H	16.1	3.6	25.4	25.4	16	9.2	2.0	3.6	0.63	3.6



The metric BTM weld bracket, with its dual-line projections, provides a threaded hole at a right angle to the component to which it is welded. The BTM is welded without drilling or punching a hole because it is attached to and not through the surface. The dual-line projections contain the right amount of metal, are uniform in height and length to assure a sound permanent offset thread to which the mating parts can be quickly and firmly attached.



In the larger thread sizes, there is a pilot that insures the proper thread engagement.

Material:C1010 High-Welding Quality, Low Carbon Steel
 Finish:Plain, Unless Specified
 Threads:ASME B1.13M-2005

Tensile Strength:60,000 psi
 Yield Point:30,000 psi
 Shear Strength:30,000 psi
 Elongation 2"30% Max.



Buckeye Fasteners, Inc.

5250 West 164th Street • Brook Park, Ohio 44142-1597

(800) 437-1689 • Fax: (216) 267-3228

buckeyefasteners.com • info@buckeyefasteners.com

© 2007 Buckeye Fasteners, Inc. All Rights Reserved

