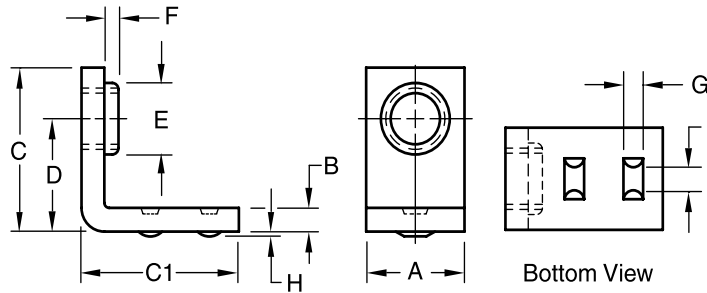


Right Angle Weld Bracket

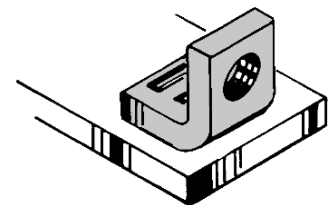


Product Specification Sheet

Part Number	Thread Size	Width	Thick.	Length of Leg From End to Angle		Ctr. of Hole To Angle	Pilot		Projection			
				C	C1		D	E	F	G	H	I
BT 1402	#8-32	0.525	0.128	0.515	0.640	0.328	None	None	0.099	0.015	0.109	
		0.500	0.122	0.485	0.610	0.296			0.089	0.009	0.079	
BT 1403	#8-32	0.525	0.128	0.610	0.670	0.406	None	None	0.099	0.015	0.109	
		0.500	0.122	0.580	0.640	0.375			0.089	0.009	0.079	
BT 1503	#10-24	0.525	0.128	0.610	0.670	0.406	None	None	0.099	0.015	0.109	
		0.500	0.122	0.580	0.640	0.375			0.089	0.009	0.079	
BT 1603	#10-32	0.525	0.128	0.610	0.670	0.406	None	None	0.099	0.015	0.109	
		0.500	0.122	0.580	0.640	0.375			0.089	0.009	0.079	
BT 2101	1/4-20	0.525	0.128	0.765	0.765	0.484	0.307	0.05	0.114	0.023	0.140	
		0.500	0.122	0.735	0.735	0.453	0.287		0.104	0.017	0.110	
BT 2701	5/16-18	0.650	0.145	1.015	1.015	0.641	0.369	0.08	0.146	0.028	0.156	
		0.625	0.139	0.985	0.985	0.609	0.349		0.136	0.022	0.126	



The BT weld bracket, with its dual-line projections, provides a threaded hole at a right angle to the component to which it is welded. The BT is welded without drilling or punching a hole because it is attached to and not through the surface. The dual-line projections contain the right amount of metal, are uniform in height and length to assure a sound permanent offset thread to which the mating parts can be quickly and firmly attached.



In the larger thread sizes, there is a pilot that insures the proper thread engagement.

Material: C1010 High-Welding Quality, Low Carbon Steel
 Finish: Plain, Unless Specified
 Threads: Unified Standard Class 2B ASME B1.1-2003

Tensile Strength: 60,000 psi
 Yield Point: 30,000 psi
 Shear Strength: 30,000 psi
 Elongation 2" 30% Max.



Buckeye Fasteners, Inc.

5250 West 164th Street • Brook Park, Ohio 44142-1597

(800) 437-1689 • Fax: (216) 267-3228

buckeyefasteners.com • info@buckeyefasteners.com

© 2007 Buckeye Fasteners, Inc. All Rights Reserved

