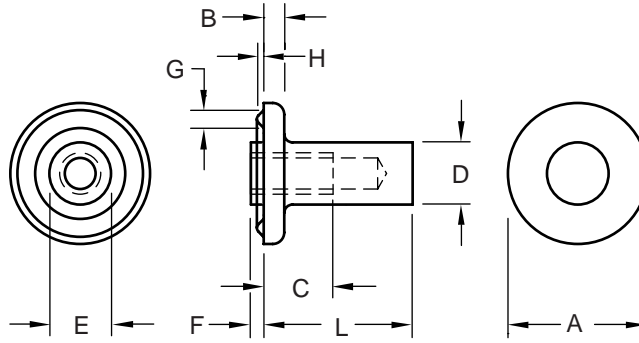


**Metric
Flanged Weld
Nut With Ring
Projection**



**Product
Specification
Sheet**

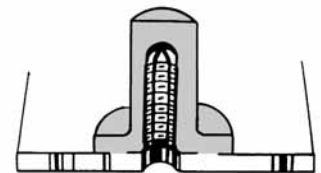
Part Number	Thread Size/Pitch	Head Diameter	Head Thickness	Length Overall	Projection		Minimum Thread Depth	Body Diameter
		Tol.	Tol.	Tol.	Height	Width		Tol.
			+ 0.13 - 0.13	+ 0.0 - 0.4	+ 0.10 - 0.05	+ 0.15 - 0.10		
A	B	L	H	G	C	D		
WWM 03505	M3.5 x 0.6-6H	11.5 ± 0.4	1.9	10.7	0.46	1.5	4.80	5.3
WWM 04002	M4 x 0.7-6H	11.5 ± 0.4	1.9	14.0	0.46	1.5	6.35	6.3
WWM 05009	M5 x 0.8-6H	15.0 ± 0.4	2.5	17.0	0.71	2.1	9.50	7.1
WWM 06013	M6 x 1-6H	20.4 ± 0.45	3.1	23.4	0.96	2.7	12.70	9.0
WWM 08014	M8 x 1.25-6H	23.0 ± 0.45	3.8	25.0	1.09	3.0	14.30	11.3
WWM 08016 *	M8 x 1.25-6H	23.0 ± 0.45	3.8	25.0	1.09	3.0	14.30	11.3

* Has locating pilot with diameter of 11.3 (E), height of 2.0 max (F) and needs an 11.9 diameter hole.



The WWM metric weld nut is a blind-hole tapped nut. It has a 360° ring projection that provides a sound hermetic seal manufactured to eliminate cumbersome operations of sealing, caulking or installing gaskets.

Additional weld strength is provided by the greater weld area of this nut's 360° ring projection. This makes it particularly suitable for welding to thin sheets. Extra long thread engagement of the WWM weld nut assures fastening security of mating parts.



Material:C1010 High-Welding
Quality, Low Carbon Steel
Finish:Plain, Unless Specified
Threads:ASME B1.13M-2005

Tensile Strength:60,000 psi
Yield Point:30,000 psi
Shear Strength:30,000 psi
Elongation 2"30% Max.



Buckeye Fasteners, Inc.

5250 West 164th Street • Brook Park, Ohio 44142-1597

(800) 437-1689 • Fax: (216) 267-3228

buckeyefasteners.com • info@buckeyefasteners.com

© 2007 Buckeye Fasteners, Inc. All Rights Reserved

