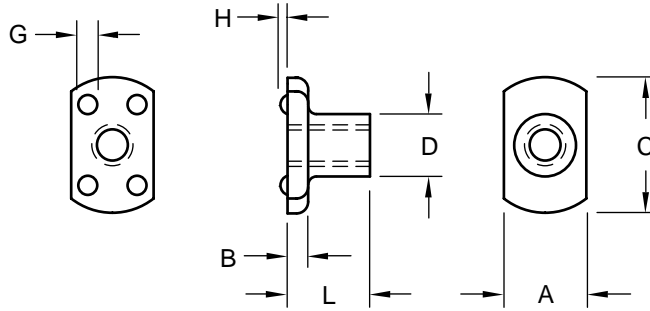


**Rectangular  
Flange  
Projection  
Weld Nut**



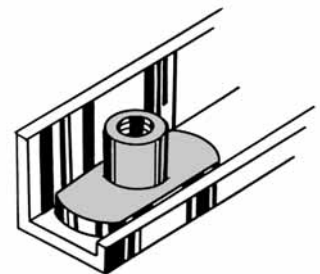
**Product  
Specification  
Sheet**

Part Number	Thread Size	Thickness (Overall)	Flange			Projection		Body Diameter
			Width	Thickness	Length	Dia.	Height	
			L	A	B	C	G	
WT 1131	#6-32	0.327	0.313	0.083	0.500	0.075	0.027	0.223
		0.307	0.298	0.073	0.480	0.065	0.023	0.213
WT 1431	#8-32	0.327	0.313	0.083	0.500	0.075	0.027	0.255
		0.307	0.298	0.073	0.480	0.065	0.023	0.245
WT 1538	#10-24	0.390	0.375	0.099	0.625	0.085	0.032	0.283
		0.370	0.360	0.089	0.605	0.075	0.028	0.273
WT 1638	#10-32	0.390	0.375	0.099	0.625	0.085	0.032	0.283
		0.370	0.360	0.089	0.605	0.075	0.028	0.273
WT 2150	1/4-20	0.515	0.500	0.114	0.815	0.120	0.045	0.378
		0.495	0.485	0.104	0.785	0.110	0.041	0.368

The WT weld nut employs a "T" shaped head for use in channels, narrow flanges or other confined areas. Four projections on top of the flange are exactly spaced to provide good weld balance, positioning and to prevent shunting of the metal into the threads. Location of projections on top of the flange eliminates the need for prepared holes because the nut is welded to (not through) the surface of the sheet.



When welding into position, the WT weld nut becomes a blind-hole nut application and the longer body provides additional thread engagement for secure positive mounting.



Material: ..... C1010 High-Welding  
Quality, Low Carbon Steel  
Finish: ..... Plain, Unless Specified  
Threads: ..... Unified Standard Class 2B  
ASME B1.1-2003

Tensile Strength: ..... 60,000 psi  
Yield Point: ..... 30,000 psi  
Shear Strength: ..... 30,000 psi  
Elongation 2" ..... 30% Max.



**Buckeye Fasteners, Inc.**

5250 West 164th Street • Brook Park, Ohio 44142-1597

**(800) 437-1689 • Fax: (216) 267-3228**

buckeyefasteners.com • info@buckeyefasteners.com

© 2007 Buckeye Fasteners, Inc. All Rights Reserved

