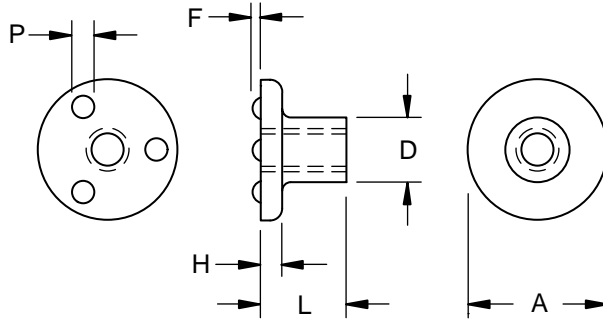


**Stainless Steel Flange Weld Nut 3 Projections On Top Of Head**

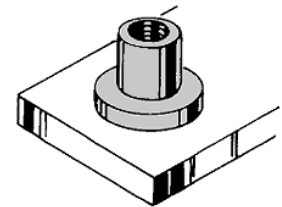


**Product Specification Sheet**

Part Number	Thread Size	Thickness (Overall)		Body Diameter		Flange		Projection	
		L	D	Dia.	Height	Dia.	Height		
								A	H
WFZ 1105	#6-32	0.327	0.218	0.510	0.068	0.085	0.032		
		0.307	0.213	0.480	0.058	0.075	0.028		
WFZ 1405	#8-32	0.327	0.250	0.510	0.068	0.085	0.032		
		0.307	0.244	0.480	0.058	0.075	0.028		
WFZ 1537	#10-24	0.390	0.277	0.630	0.090	0.105	0.042		
		0.370	0.271	0.600	0.080	0.095	0.038		
WFZ 1637	#10-32	0.390	0.277	0.630	0.090	0.105	0.042		
		0.370	0.271	0.600	0.080	0.095	0.038		
WFZ 2150	1/4-20	0.515	0.375	0.815	0.114	0.135	0.052		
		0.495	0.367	0.785	0.104	0.125	0.048		
WFZ 2709	5/16-18	0.577	0.450	1.005	0.130	0.155	0.062		
		0.557	0.442	0.970	0.120	0.145	0.058		
WFZ 3310	3/8-16	0.640	0.500	1.005	0.130	0.155	0.062		
		0.620	0.492	0.970	0.120	0.145	0.058		



On the WFZ stainless steel weld nut, the projections are located right on the top of the flange to permit welding to (rather than through) the surface of the component. Three precision projections of uniform height and mass are properly positioned on the flange to assure a weld that leaves the exterior surface of the component virtually unmarred.



This weld nut has been manufactured to give extra long thread engagement in blind hole applications. The long body of the nut can also function as a bearing or mounting surface or spacer.

Material: ..... 18-8 Stainless Steel  
 Finish: ..... Passivated  
 Threads: ..... Unified Standard Class 2B  
 ASME B1.1-2003

Tensile Strength: ..... 80,000 psi  
 Yield Point: ..... 35,000 psi  
 Elongation 2" ..... 55%



**Buckeye Fasteners, Inc.**

5250 West 164th Street • Brook Park, Ohio 44142-1597

(800) 437-1689 • Fax: (216) 267-3228

buckeyefasteners.com • info@buckeyefasteners.com

© 2007 Buckeye Fasteners, Inc. All Rights Reserved

