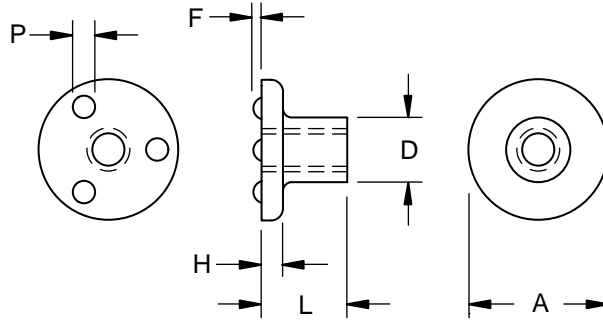


**Metric  
Flange Weld  
Nut Three  
Projection  
Top Of Head**

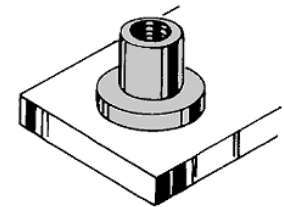


**Product  
Specification  
Sheet**

| Part Number | Thread Size / Pitch | Head Diameter  | Head Thickness   | Length Overall | Projection       |                  | Body Diameter  |
|-------------|---------------------|----------------|------------------|----------------|------------------|------------------|----------------|
|             |                     | Tol.           | Tol.             | Tol.           | Diameter Tol.    | Height Tol.      | Tol.           |
|             |                     |                | + 0.13<br>- 0.13 | + 0.2<br>- 0.3 | + 0.13<br>- 0.13 | + 0.05<br>- 0.05 | + 0.1<br>- 0.1 |
|             |                     | A              | H                | L              | P                | F                | D              |
| WFM 03507   | M3.5 x 0.6-6H       | 12.0<br>± 0.35 | 1.90             | 7.5            | 1.78             | 0.64             | 5.3            |
| WFM 04008   | M4 x 0.7-6H         | 14.0<br>± 0.35 | 2.20             | 8.0            | 2.13             | 0.81             | 6.3            |
| WFM 05010   | M5 x 0.8-6H         | 16.0<br>± 0.35 | 2.50             | 10.0           | 2.54             | 1.02             | 7.1            |
| WFM 06012   | M6 x 1-6H           | 20.0<br>± 0.45 | 3.10             | 12.5           | 3.10             | 1.20             | 9.0            |
| WFM 08015   | M8 x 1.25-6H        | 25.0<br>± 0.45 | 3.80             | 15.0           | 3.56             | 1.40             | 11.3           |
| WFM 10017   | M10 x 1.5-6H        | 27.0<br>± 0.45 | 4.50             | 17.0           | 3.81             | 1.52             | 13.4           |



On the metric WFM weld nut, the projections are located right on the top of the flange to permit welding to (rather than through) the surface of the component. Three precision projections of uniform height and mass are properly positioned on the flange to assure a weld that leaves the exterior surface of the component virtually unmarred.



This weld nut has been manufactured to give extra long thread engagement in blind hole applications. The long body of the nut can also function as a bearing or mounting surface or spacer.

Material: .....C1010 High-Welding  
Quality, Low Carbon Steel  
Finish: .....Plain, Unless Specified  
Threads: .....ASME B1.13M-2005

Tensile Strength: .....60,000 psi  
Yield Point: .....30,000 psi  
Shear Strength: .....30,000 psi  
Elongation 2" .....30% Max.



**Buckeye Fasteners, Inc.**

5250 West 164th Street • Brook Park, Ohio 44142-1597

**(800) 437-1689 • Fax: (216) 267-3228**

buckeyefasteners.com • info@buckeyefasteners.com

© 2007 Buckeye Fasteners, Inc. All Rights Reserved

