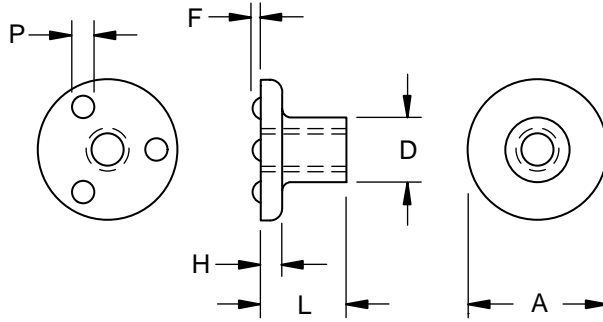


**Flange Weld  
Nut Three  
Projection  
Top Of Head**

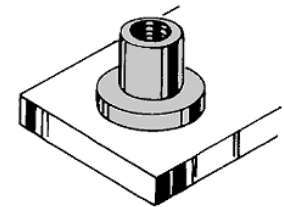


**Product  
Specification  
Sheet**

Part Number	Thread Size	Thickness (Overall)	Body Diameter	Flange		Projection	
				Dia.	Height	Dia.	Height
				A	H	P	F
WF 1105	#6-32	0.327	0.218	0.510	0.068	0.085	0.032
		0.307	0.213	0.480	0.058	0.075	0.028
WF 1405	#8-32	0.327	0.250	0.510	0.068	0.085	0.032
		0.307	0.244	0.480	0.058	0.075	0.028
WF 1537	#10-24	0.390	0.277	0.630	0.090	0.105	0.042
		0.370	0.271	0.600	0.080	0.095	0.038
WF 1637	#10-32	0.390	0.277	0.630	0.090	0.105	0.042
		0.370	0.271	0.600	0.080	0.095	0.038
WF 2150	1/4-20	0.515	0.375	0.815	0.114	0.135	0.052
		0.495	0.367	0.785	0.104	0.125	0.048
WF 2709	5/16-18	0.577	0.450	1.005	0.130	0.155	0.062
		0.557	0.442	0.970	0.120	0.145	0.058
WF 3310	3/8-16	0.640	0.500	1.005	0.130	0.155	0.062
		0.620	0.492	0.970	0.120	0.145	0.058



On the WF weld nut, the projections are located right on the top of the flange to permit welding to (rather than through) the surface of the component. Three precision projections of uniform height and mass are properly positioned on the flange to assure a weld that leaves the exterior surface of the component virtually unmarred.



This weld nut has been manufactured to give extra long thread engagement in blind hole applications. The long body of the nut can also function as a bearing or mounting surface or spacer.

Material: ..... C1010 High-Welding  
Quality, Low Carbon Steel  
Finish: ..... Plain, Unless Specified  
Threads: ..... Unified Standard Class 2B  
ASME B1.1-2003

Tensile Strength: ..... 60,000 psi  
Yield Point: ..... 30,000 psi  
Shear Strength: ..... 30,000 psi  
Elongation 2" ..... 30% Max.



**Buckeye Fasteners, Inc.**

5250 West 164th Street • Brook Park, Ohio 44142-1597

(800) 437-1689 • Fax: (216) 267-3228

buckeyefasteners.com • info@buckeyefasteners.com

© 2007 Buckeye Fasteners, Inc. All Rights Reserved

