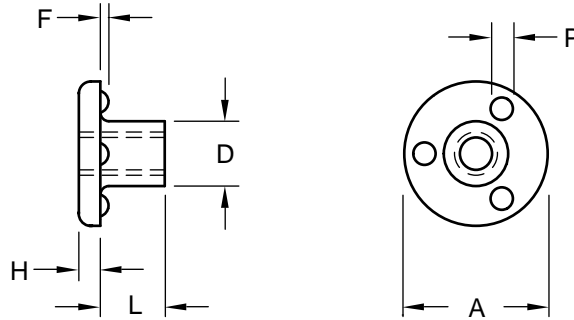


Stainless Steel Flange Weld Nut Three Projections Under Head

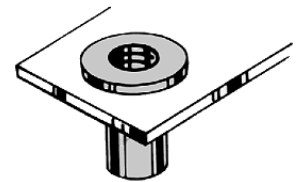


Product Specification Sheet

Part Number	Thread Size	Thickness Under Flange	Flange		Body	Projection	
			Dia.	Height	Dia.	Dia.	Height
			L	A	H	D	P
RHZ 1104	#6-32	0.265	0.635	0.083	0.250	0.105	0.042
		0.245	0.605	0.073	0.244	0.095	0.038
RHZ 1404	#8-32	0.265	0.635	0.083	0.250	0.105	0.042
		0.245	0.605	0.073	0.244	0.095	0.038
RHZ 1505	#10-24	0.327	0.755	0.099	0.277	0.125	0.047
		0.307	0.725	0.089	0.271	0.115	0.043
RHZ 1605	#10-32	0.327	0.755	0.099	0.277	0.125	0.047
		0.307	0.725	0.089	0.271	0.115	0.043
RHZ 2138	1/4-20	0.390	0.835	0.130	0.375	0.135	0.052
		0.370	0.805	0.120	0.367	0.125	0.048
RHZ 2708	5/16-18	0.515	1.005	0.146	0.450	0.155	0.062
		0.495	0.970	0.136	0.442	0.145	0.058
RHZ 3308	3/8-16	0.515	1.005	0.146	0.500	0.155	0.062
		0.495	0.970	0.136	0.492	0.145	0.058



The RHZ stainless steel weld nut is a self-locating, through-hole weld nut with a long body and three weld projections on the underside of the head. Its self-locating feature facilitates positive positioning of the nut in holes for welding operation. The location of the three spherical projections on the underside of the head permits the body of the nut to be attached through a hole in the component. This provides a flush surface to which mating parts can be attached.



The rugged extra-long body of the RHZ weld nut allows its use as a bearing surface or structural support.

Material: 18-8 Stainless Steel
 Finish: Passivated
 Threads: Unified Standard Class 2B
 ASME B1.1-2003

Tensile Strength: 80,000 psi
 Yield Point: 35,000 psi
 Elongation 2" 55%



Buckeye Fasteners, Inc.

5250 West 164th Street • Brook Park, Ohio 44142-1597

(800) 437-1689 • Fax: (216) 267-3228

buckeyefasteners.com • info@buckeyefasteners.com

© 2007 Buckeye Fasteners, Inc. All Rights Reserved

