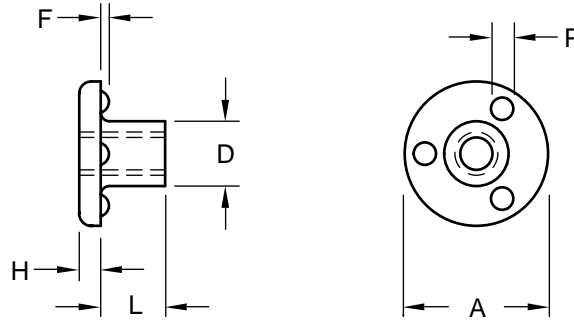


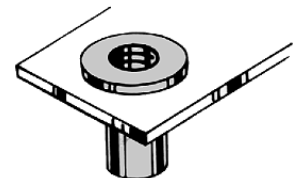
**Metric  
Flange Weld  
Nut Three  
Projections  
Under Head**



**Product  
Specification  
Sheet**

Part Number	Thread Size	Head Diameter	Head Thickness	Length Under Head	Projection		Body Diameter
		Tol.	Tol.	Tol.	Diameter Tol.	Height Tol.	Tol.
			+ 0.13 - 0.13	+ 0.2 - 0.3	+ 0.13 - 0.13	+ 0.05 - 0.05	+ 0.1 - 0.1
		A	H	L	P	F	D
RHM 03506	M3.5 x 0.6-6H	15.8 ± 0.3	1.98	6.0	2.54	1.02	6.3
RHM 04006	M4 x 0.7-6H	15.8 ± 0.3	1.98	6.3	2.54	1.02	6.3
RHM 05008	M5 x 0.8-6H	18.8 ± 0.4	2.50	8.0	3.10	1.20	7.1
RHM 06010	M6 x 1-6H	20.9 ± 0.4	3.10	10.0	3.30	1.27	9.0
RHM 08013	M8 x 1.25-6H	25.0 ± 0.4	3.60	12.9	3.56	1.40	11.3
RHM 10014	M10 x 1.5-6H	27.0 ± 0.4	4.50	14.0	3.81	1.52	13.4

The RHM metric weld nut is a self-locating, through-hole weld nut with a long body and three weld projections on the underside of the head. Its self-locating feature facilitates positive positioning of the nut in holes for welding operation. The location of the three spherical projections on the underside of the head permits the body of the nut to be attached through a hole in the component. This provides a flush surface to which mating parts can be attached.



The rugged extra-long body of the RHM weld nut allows its use as a bearing surface or structural support.

Material: .....C1010 High-Welding  
Quality, Low Carbon Steel  
Finish: .....Plain, Unless Specified  
Threads: .....ASME B1.13M-2005

Tensile Strength: .....60,000 psi  
Yield Point: .....30,000 psi  
Shear Strength: .....30,000 psi  
Elongation 2" .....30% Max.



**Buckeye Fasteners, Inc.**

5250 West 164th Street • Brook Park, Ohio 44142-1597

**(800) 437-1689 • Fax: (216) 267-3228**

buckeyefasteners.com • info@buckeyefasteners.com

© 2007 Buckeye Fasteners, Inc. All Rights Reserved

