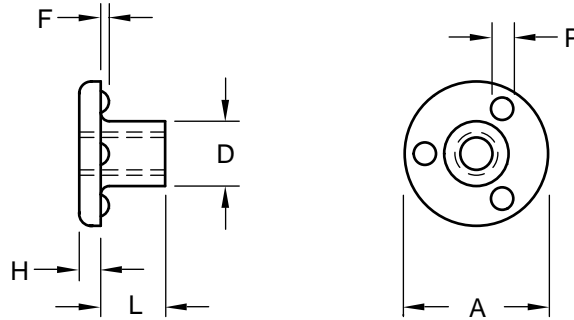


**Flange Weld  
Nut Three  
Projections  
Under Head**

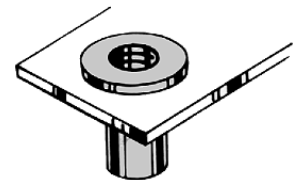


**Product  
Specification  
Sheet**

Part Number	Thread Size	Thickness Under Flange	Flange		Body Diameter	Projection	
			Dia.	Height		Dia.	Height
			L	A		H	D
RH 1104	#6-32	0.265	0.635	0.083	0.250	0.105	0.042
		0.245	0.605	0.073	0.244	0.095	0.038
RH 1404	#8-32	0.265	0.635	0.083	0.250	0.105	0.042
		0.245	0.605	0.073	0.244	0.095	0.038
RH 1505	#10-24	0.327	0.755	0.099	0.277	0.125	0.047
		0.307	0.725	0.089	0.271	0.115	0.043
RH 1605	#10-32	0.327	0.755	0.099	0.277	0.125	0.047
		0.307	0.725	0.089	0.271	0.115	0.043
RH 2138	1/4-20	0.390	0.835	0.130	0.375	0.135	0.052
		0.370	0.805	0.120	0.367	0.125	0.048
RH 2708	5/16-18	0.515	1.005	0.146	0.450	0.155	0.062
		0.495	0.970	0.136	0.442	0.145	0.058
RH 3308	3/8-16	0.515	1.005	0.146	0.500	0.155	0.062
		0.495	0.970	0.136	0.492	0.145	0.058



The RH weld nut is a self-locating, through-hole weld nut with a long body and three weld projections on the underside of the head. Its self-locating feature facilitates positive positioning of the nut in holes for welding operation. The location of the three spherical projections on the underside of the head permits the body of the nut to be attached through a hole in the component. This provides a flush surface to which mating parts can be attached.



The rugged extra-long body of the RH weld nut allows its use as a bearing surface or structural support.

Material: ..... C1010 High-Welding  
Quality, Low Carbon Steel  
Finish: ..... Plain, Unless Specified  
Threads: ..... Unified Standard Class 2B  
ASME B1.1-2003

Tensile Strength: ..... 60,000 psi  
Yield Point: ..... 30,000 psi  
Shear Strength: ..... 30,000 psi  
Elongation 2" ..... 30% Max.



**Buckeye Fasteners, Inc.**

5250 West 164th Street • Brook Park, Ohio 44142-1597

**(800) 437-1689 • Fax: (216) 267-3228**

buckeyefasteners.com • info@buckeyefasteners.com

© 2007 Buckeye Fasteners, Inc. All Rights Reserved

