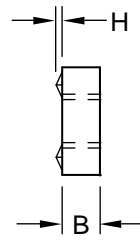
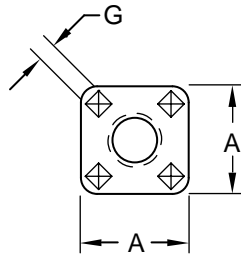


Metric Square Unpiloted Projection Weld Nut

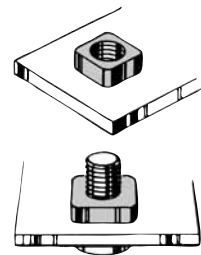


Product Specification Sheet

Part Number	Thread Size / Pitch	Width	Thickness	Projection	
		Tol.	Tol.	Width Tol.	Height Tol.
		+ 0.1	+ 0.0	+ 0.0	+ 0.08
		- 0.3	- 0.3	- 0.3	- 0.08
		A	B	G	H
WSM 03511	M3.5 x 0.6-6H	11.0	3.0	2.14	0.64
WSM 04011	M4 x 0.7-6H	11.0	5.0	2.14	0.64
WSM 05011	M5 x 0.8-6H	11.0	5.0	2.14	0.64
WSM 06012	M6 x 1-6H	12.6	5.0	2.14	0.74
WSM 06014	M6 x 1-6H	14.2	5.8	2.54	0.89
WSM 08014	M8 x 1.25-6H	14.2	5.8	2.54	0.89
WSM 10015	M10 x 1.5-6H	15.8	6.6	2.92	0.89



The metric WSM weld nut is a square nut with four projections located to provide proper seating and sturdy positive welds. It also has deep threads for secure engagement and strength. The WSM weld nut is also countersunk on both sides to guide the mating screw quickly into the threads. Rounded corners on the WSM weld nut ease use in confined areas. The WSM is easily fixtured for rapid welding by a locator pin in the electrode.



WSM projection weld nuts provide strong, primary fastener foundations which can improve product reliability, speed production and help reduce fastening costs.

Material:C1010 High-Welding Quality, Low Carbon Steel
 Finish:Plain, Unless Specified
 Threads:ASME B1.13M-2005

Tensile Strength:60,000 psi
 Yield Point:30,000 psi
 Shear Strength:30,000 psi
 Elongation 2"30% Max.



Buckeye Fasteners, Inc.

5250 West 164th Street • Brook Park, Ohio 44142-1597

(800) 437-1689 • Fax: (216) 267-3228

buckeyefasteners.com • info@buckeyefasteners.com

© 2007 Buckeye Fasteners, Inc. All Rights Reserved

