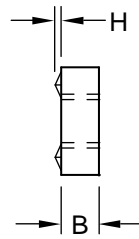
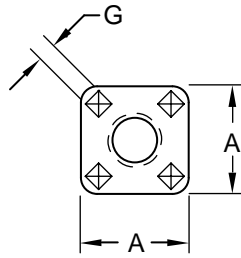


Square Unpiloted Projection Weld Nut

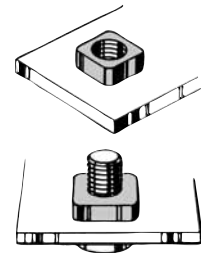


Product Specification Sheet

Part Number	Thread Size	Projection			
		Width	Thick.	Width	Height
		A	B	G	H
WS 1102	#6-32	0.438	0.116	0.083	0.027
		0.423	0.106	0.073	0.023
WS 1401	#8-32	0.438	0.195	0.083	0.027
		0.423	0.185	0.073	0.023
WS 1501	#10-24	0.438	0.195	0.083	0.027
		0.423	0.185	0.073	0.023
WS 1601	#10-32	0.438	0.195	0.083	0.027
		0.423	0.185	0.073	0.023
WS 2101	1/4-20	0.500	0.195	0.083	0.031
		0.485	0.185	0.073	0.027
WS 2102	1/4-20	0.562	0.226	0.099	0.037
		0.547	0.216	0.089	0.033
WS 2701	5/16-18	0.562	0.226	0.099	0.037
		0.547	0.216	0.089	0.033
WS 3301	3/8-16	0.625	0.257	0.114	0.037
		0.610	0.247	0.104	0.033



The WS weld nut is a square nut with four projections located to provide proper seating and sturdy positive welds. It also has deep threads for secure engagement and strength. The WS weld nut is also countersunk on both sides to guide the mating screw quickly into the threads. Rounded corners on the WS weld nut ease use in confined areas. The WS is easily fixtured for rapid welding by a locator pin in the electrode.



WS projection weld nuts provide strong, primary fastener foundations which can improve product reliability, speed production and help reduce fastening costs.

Material: C1010 High-Welding
 Quality, Low Carbon Steel
 Finish: Plain, Unless Specified
 Threads: Unified Standard Class 2B
 ASME B1.1-2003

Tensile Strength: 60,000 psi
 Yield Point: 30,000 psi
 Shear Strength: 30,000 psi
 Elongation 2" 30% Max.



Buckeye Fasteners, Inc.

5250 West 164th Street • Brook Park, Ohio 44142-1597

(800) 437-1689 • Fax: (216) 267-3228

buckeyefasteners.com • info@buckeyefasteners.com

© 2007 Buckeye Fasteners, Inc. All Rights Reserved

