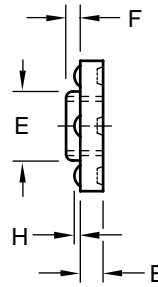
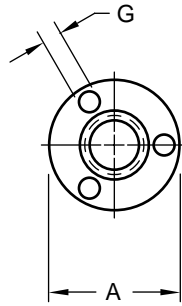


**Round
Projection
Weld Nut**



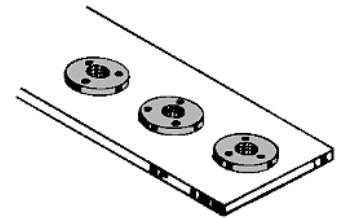
**Product
Specification
Sheet**

Part Number	Thread Size	Diameter	Thickness	Pilot		Projections		Hole In Sheet
				Dia.	Height	Diameter	Height	
				A	B	E	F	
RD 1101	#6-32	0.457	0.097	0.198	0.03	0.075	0.018	0.203
		0.442	0.091	0.178		0.065	0.014	
RD 1401	#8-32	0.457	0.097	0.213	0.03	0.075	0.018	0.219
		0.442	0.091	0.193		0.065	0.014	
RD 1501	#10-24	0.457	0.097	0.244	0.03	0.075	0.018	0.250
		0.442	0.091	0.224		0.065	0.014	
RD 1701	#10-32	0.457	0.097	0.244	0.03	0.075	0.018	0.250
		0.442	0.091	0.224		0.065	0.014	
RD 2109	1/4-20	0.570	0.127	0.307	0.05	0.095	0.022	0.312
		0.555	0.123	0.287		0.085	0.018	
RD 2712	5/16-18	0.740	0.145	0.369	0.08	0.125	0.037	0.374
		0.725	0.139	0.349		0.115	0.033	



The RD weld nut was manufactured for applications where orientation is a factor, where there are space limitations and where they will be applied by automatic equipment. The RD weld nut is a self-locating, through-hole weld nut with three precision, spherical weld projections that give strong, uniform welds.

RD projection weld nuts offer clean looks and reliability. They can speed up production and reduce fastening costs.



Material: C1010 High-Welding Quality, Low Carbon Steel
 Finish: Plain, Unless Specified
 Threads: Unified Standard Class 2B ASME B1.1-2003

Tensile Strength: 60,000 psi
 Yield Point: 30,000 psi
 Shear Strength: 30,000 psi
 Elongation 2" 30% Max.



Buckeye Fasteners, Inc.

5250 West 164th Street • Brook Park, Ohio 44142-1597

(800) 437-1689 • Fax: (216) 267-3228

buckeyefasteners.com • info@buckeyefasteners.com

© 2007 Buckeye Fasteners, Inc. All Rights Reserved

