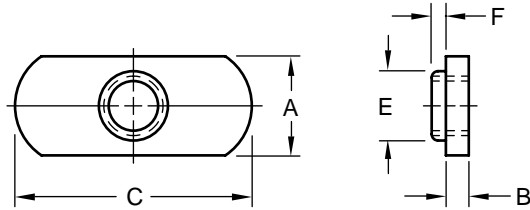


# Metric Double Tab Spotweld Nut

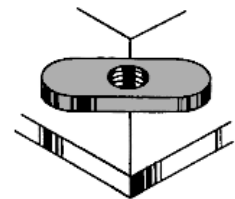


# Product Specification Sheet

Part Number	Thread Size	Width		Thick.	Length	Pilot		Hole In Sheet
				Tol.	Tol.	Dia.	Hgt.	
				+ 0.1 - 0.1	+ 0.4 - 0.4	+ 0.2 - 0.3	+ 0.3 - 0.1	
		A	Tol. "A"	B	C	E	F	
NDM 03522	M3.5 x 0.6-6H	11.0	+ 0.3 - 0.2	2.4	22.0	4.8	0.8	5.2
NDM 04022	M4 x 0.7-6H	11.0	+ 0.3 - 0.2	2.4	22.0	5.2	0.8	5.6
NDM 05022	M5 x 0.8-6H	11.0	+ 0.3 - 0.2	2.4	22.0	6.0	0.8	6.4
NDM 06028	M6 x 1-6H	13.0	+ 0.4 - 0.3	3.2	28.5	7.6	1.2	8.0
NDM 08038	M8 x 1.25-6H	16.0	+ 0.4 - 0.3	3.6	38.0	9.2	2.0	9.6
NDM 10038	M10 x 1.5-6H	16.0	+ 0.4 - 0.3	3.6	38.0	11.8	2.4	12.2
NDM 12038	M12 x 1.75-6H	19.4	+ 0.9 - 0.8	4.8	38.0	14.5 13.7	2.4	14.7



The NDM metric weld nut is a dual-tab spotweld nut manufactured for applications requiring additional strength where tension is against the weld. The location of the twin-tabs enables the NDM to be used in bridging corners and recessed areas. A precision pilot speeds location and provides a full thread engagement. The NDM can use the same electrodes, equipment and settings used in production, thus eliminating setup and changeover time, thereby lowering in-place fastener cost.



Material: ..... C1010 High-Welding Quality, Low Carbon Steel  
 Finish: ..... Plain, Unless Specified  
 Threads: ..... ASME B1.13M-2005

Tensile Strength: ..... 60,000 psi  
 Yield Point: ..... 30,000 psi  
 Shear Strength: ..... 30,000 psi  
 Elongation 2" ..... 30% Max.



## Buckeye Fasteners, Inc.

5250 West 164th Street • Brook Park, Ohio 44142-1597

(800) 437-1689 • Fax: (216) 267-3228

buckeyefasteners.com • info@buckeyefasteners.com

© 2007 Buckeye Fasteners, Inc. All Rights Reserved

