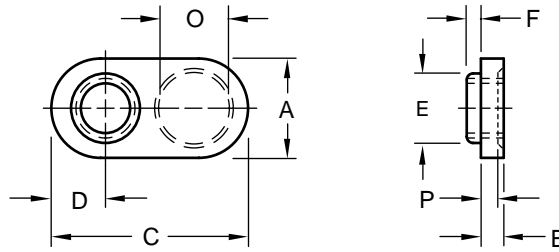


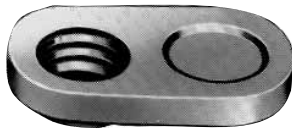
Single Tab Spotweld Nut



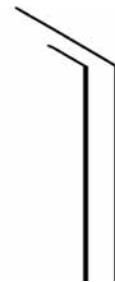
Product Specification Sheet

Part Number	Thread Size	Width	Thickness	Length	Pilot		Target Area		Center of Pilot To Edge of Nut	Hole In Sheet
					Dia.	Height	Dia.	Thickness		
					E	F	O	P		
XN 1101	#6-32	0.390	0.097	0.734	0.198	0.03	0.265	0.081	0.208	0.203
			0.091	0.704	0.178		0.235	0.075		
XN 1401	#8-32	0.390	0.097	0.734	0.213	0.03	0.265	0.081	0.208	0.219
			0.091	0.704	0.193		0.235	0.075		
XN 1513	#10-24	0.453	0.097	0.827	0.244	0.03	0.296	0.081	0.208	0.250
			0.091	0.797	0.224		0.266	0.075		
XN 1713	#10-32	0.453	0.097	0.827	0.244	0.03	0.296	0.081	0.208	0.250
			0.091	0.797	0.224		0.266	0.075		
XN 2115	1/4-20	0.448	0.097	0.953	0.291	0.05	0.296	0.081	0.270	0.297
			0.091	0.923	0.271		0.266	0.075		
XN 2719 *	5/16-18	0.448	0.128	1.140	0.369	0.08	None	None	0.301	0.375
			0.122	1.110	0.349					
XN 3321 *	3/8-16	0.572	0.128	1.265	0.448	0.09	None	None	0.364	0.453
			0.122	1.235	0.428					

* No Target Area



The XN spot weld nut features a long narrow body suitable for attachment in confined areas such as channels, narrow angles or close to corners, as well as for general applications. The XN spot weld nut has a precision pilot, full threads and is countersunk for easy entry of mating screw. There is an electrode target area of reduced thickness found on the 1/4–20 and smaller thread sizes. This target creates a more favorable balance of material thickness when the XN is welded to lighter gage stock, where the majority of the smaller sizes are used.



Material: C1010 High-Welding Quality, Low Carbon Steel
 Finish: Plain, Unless Specified
 Threads: Unified Standard Class 2B ASME B1.1-2003

Tensile Strength: 60,000 psi
 Yield Point: 30,000 psi
 Shear Strength: 30,000 psi
 Elongation 2" 30% Max.



Buckeye Fasteners, Inc.

5250 West 164th Street • Brook Park, Ohio 44142-1597

(800) 437-1689 • Fax: (216) 267-3228

buckeyefasteners.com • info@buckeyefasteners.com

© 2007 Buckeye Fasteners, Inc. All Rights Reserved

