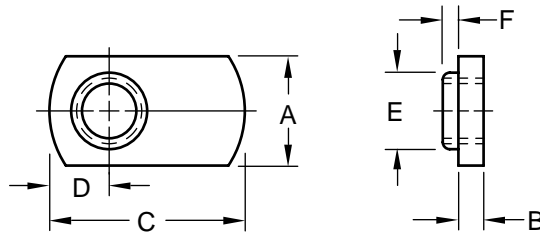


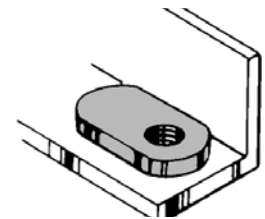
# Metric Single Tab Spotweld Nut



# Product Specification Sheet

Part Number	Thread Size / Pitch	Width		Thick-ness	Length	Pilot To End	Pilot		Hole In Sheet
				Tol.	Tol.	Tol.	Dia.	Height	
		+ 0.1	+ 0.4	+ 0.4	+ 0.2	+ 0.3			
		- 0.1	- 0.4	- 0.4	- 0.3	- 0.1			
A Tol. "A"		B	C	D	E	F			
SNM 03516	M3.5 x 0.6-6H	11.0	+ 0.3 - 0.2	2.4	16.0	4.8	4.8	0.8	5.2
SNM 04016	M4 x 0.7-6H	11.0	+ 0.3 - 0.2	2.4	16.0	4.8	5.2	0.8	5.6
SNM 05016	M5 x 0.8-6H	11.0	+ 0.3 - 0.2	2.4	16.0	4.8	6.0	0.8	6.4
SNM 06020	M6 x 1-6H	13.0	+ 0.4 - 0.3	3.2	20.5	6.4	7.6	1.2	8.0
SNM 08025	M8 x 1.25-6H	16.0	+ 0.4 - 0.3	3.6	25.0	7.1	9.2	2.0	9.6
SNM 10028	M10 x 1.5-6H	16.0	+ 0.4 - 0.3	3.6	28.5	8.7	11.8	2.4	12.2

The SNM weld nut is a spotweld, precision-pilot nut which features an optimum welding tab. This tab will take several sizes of electrodes and permits use of the same equipment, settings and electrodes used to produce your product or product components. Where the nut is to function as a stiffener or brace, in addition to being a fastener, the SNM weld nut is ideal.



Material: .....C1010 High-Welding  
Quality, Low Carbon Steel  
Finish: .....Plain, Unless Specified  
Threads: .....ASME B1.13M-2005

Tensile Strength: .....60,000 psi  
Yield Point: .....30,000 psi  
Shear Strength: .....30,000 psi  
Elongation 2" .....30% Max.



## Buckeye Fasteners, Inc.

5250 West 164th Street • Brook Park, Ohio 44142-1597

(800) 437-1689 • Fax: (216) 267-3228

buckeyefasteners.com • info@buckeyefasteners.com

© 2007 Buckeye Fasteners, Inc. All Rights Reserved

