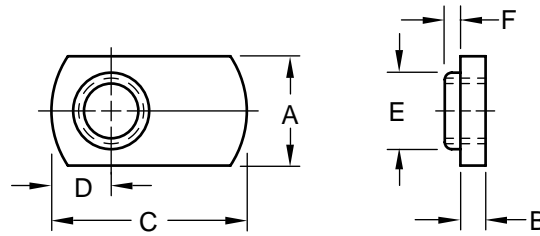


# Single Tab Spotweld Nut

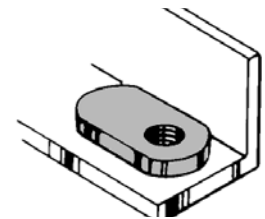


# Product Specification Sheet

Part Number	Thread Size	Width	Thickness	Length	Pilot		Center Hole To Short End	Hole In Sheet
					Dia.	Height		
					E	F		
SN 1109	#6-32	0.453	0.097	0.640	0.198	0.03	0.202	0.203
		0.433	0.091	0.610	0.178		0.172	
SN 1409	#8-32	0.453	0.097	0.640	0.213	0.03	0.202	0.219
		0.433	0.091	0.610	0.193		0.172	
SN 1510	#10-24	0.453	0.097	0.640	0.244	0.03	0.202	0.250
		0.433	0.091	0.610	0.224		0.172	
SN 1710	#10-32	0.453	0.097	0.640	0.244	0.03	0.202	0.250
		0.433	0.091	0.610	0.224		0.172	
SN 2113	1/4-20	0.520	0.128	0.827	0.307	0.05	0.265	0.312
		0.495	0.122	0.797	0.287		0.235	
SN 2213	1/4-28	0.520	0.128	0.827	0.307	0.05	0.265	0.312
		0.495	0.122	0.797	0.287		0.235	
SN 2716	5/16-18	0.655	0.145	0.999	0.369	0.08	0.296	0.375
		0.620	0.139	0.969	0.349		0.266	
SN 2816	5/16-24	0.655	0.145	0.999	0.369	0.08	0.296	0.375
		0.620	0.139	0.969	0.349		0.266	
SN 3318	3/8-16	0.655	0.145	1.140	0.448	0.09	0.359	0.453
		0.620	0.139	1.110	0.428		0.329	
SN 3418	3/8-24	0.655	0.145	1.140	0.448	0.09	0.359	0.453
		0.620	0.139	1.110	0.428		0.329	



The SN weld nut is a spotweld, precision-pilot nut which features an optimum welding tab. This tab will take several sizes of electrodes and permits use of the same equipment, settings and electrodes used to produce your product or product components. Where the nut is to function as a stiffener or brace in addition to being a fastener, the SN weld nut is ideal.



Material: ..... C1010 High-Welding Quality, Low Carbon Steel  
 Finish: ..... Plain, Unless Specified  
 Threads: ..... Unified Standard Class 2B ASME B1.1-2003

Tensile Strength: ..... 60,000 psi  
 Yield Point: ..... 30,000 psi  
 Shear Strength: ..... 30,000 psi  
 Elongation 2" ..... 30% Max.



## Buckeye Fasteners, Inc.

5250 West 164th Street • Brook Park, Ohio 44142-1597

(800) 437-1689 • Fax: (216) 267-3228

buckeyefasteners.com • info@buckeyefasteners.com

© 2007 Buckeye Fasteners, Inc. All Rights Reserved

